

M SERIES OZONE GENERATORS

Features

- Redundant Modular Ozone Chassis Design
- Stainless Steel Floor-Mount Enclosure
- Air-Cooled Ceramic and Titanium Reactor Cell
- Over-Temperature Protection
- Inlet/Outlet Isolation

Controls

- Local or Remote 4-20mA Output Control
- Remote Ozone Enable Input
- Automated Start, Stop and Purge Sequencing
- Feed Gas Control and Low Flow Switch
- Reactor Pressure Gauge
- Reactor Pressure Control
- Hand/Off/Auto Switch
- LED Visual Ozone Indicators

**Simple. Proven.
Ozone Technology.**

Powerful, Scalable and Air-Cooled

The advanced air-cooled, chassis-based design of M Series ozone generators is the foundation for a powerful ozone production system. It packages the power of Pacific Ozone's air-cooled and patented Floating Plate Technology™ ozone reactor cells with advanced electronics in a 19" rack-mountable chassis. The redundant and self-contained chassis' are housed in a stainless steel enclosure to provide ultimate mission critical ozone production security. Flexible enclosure configurations may be combined to form the most powerful air-cooled ozone generators available. Standard packages of M Series enclosures produce from 7 pounds per day to more than 100 pounds per day ozone.

Model: 3M24



Modular Design

Modular redundancy is the key to the M Series revolutionary chassis-based design, providing unsurpassed reliability. The innovative design produces a solid foundation for a flexible and robust air-cooled ozone production system. The M Series is engineered to meet the most demanding industrial ozone process requirements with easy-to-use manual and remote system control interface. An automated start, stop and purge sequencing joined with Pacific Ozone's precision ozone turn-down control provide the ultimate simple and safe operation for seamless integration in virtually all industrial applications.

M SERIES OZONE GENERATORS

Application Flexibility

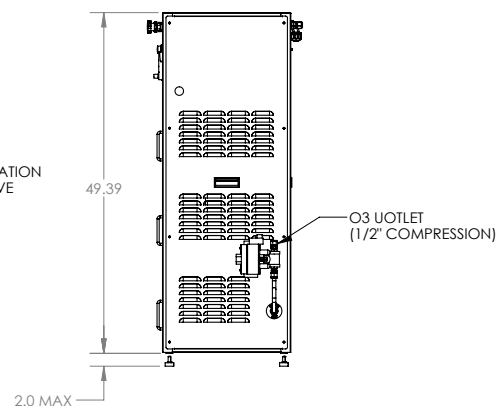
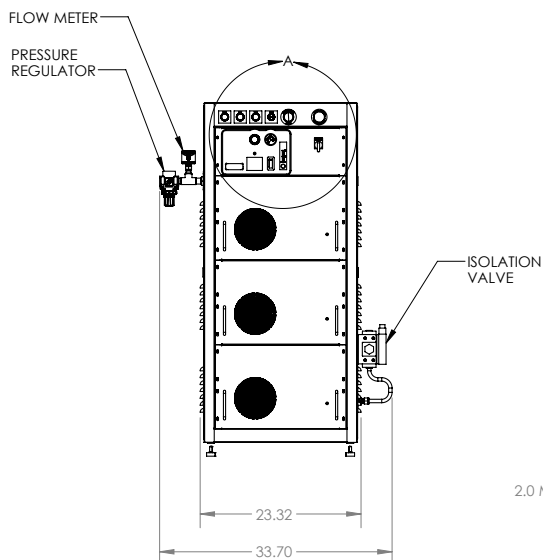
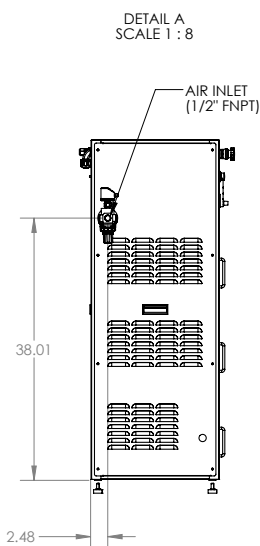
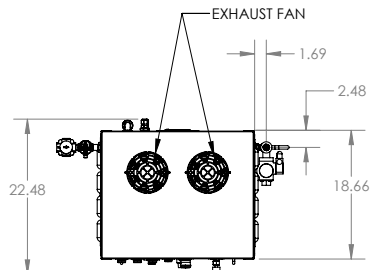
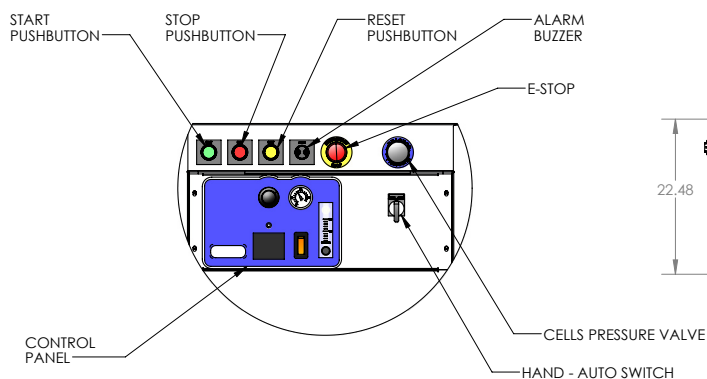
Aquaculture, Marine, Municipal Water Treatment, Industrial Water Treatment and Food & Beverage applications are ideal for M Series applications. The powerful M Series combined with its ultimate flexibility and scalability provides a superior platform for ozone production. Example: Mutual and small municipal water systems require 24/7/365 reliability. M Series ozone generators increasingly help water system operators meet increasingly stringent water quality regulations while keeping capital and operating costs low. For example, a community in Northern California with capacity to serve up to 1600 homes uses a twin bank of 9M24 ozone generators to deliver 1080 grams of ozone per hour. Only one 9M unit is required to meet the current demand while the second unit provides capacity for expansion and full system redundancy.



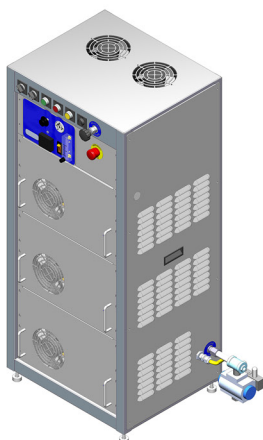
Model: 9M24 Ozone Generator System

M SERIES OZONE GENERATORS

Model: 3M23/24



Note: Drawings of other M Series models are available upon request.



Model: 3M23/24



Model: 6M23/24



Model: 9M23/24

M SERIES OZONE GENERATORS

Technical Specifications

Model/ Part Number	Rated Ozone Output	Max. Ozone Output	Max. Ozone Concentration	Rated Feed Gas Flow	Feed Gas Flow Range	Electrical Requirement	Air Cooling	Compressed Air Inlet Fitting	Ozone Outlet Fitting*	Dimensions (HxWxD)	Weight
	lbs./day (grams/hour)	lbs./day (grams/hour)	% weight	scfh (lpm)	scfh (lpm)	volts/amps frequency	scfm (lpm)	inches (mm)	inches (mm)	inches (mm)	lbs (kg)
3M23/ R-MSG033	7.1 (135)	9.3 (175)	8%	90 (42)	45-135 (42)	1Ø, 240VAC, 20A, 50/60Hz	720 (20388)	1/2" fnpt (12.7)	1/2" (12.7)	51.39x23.32x22.48 (1305x592x571)	335 (152)
3M24/ R-MSG034	9.5 (180)	11.1 (210)	8%	120 (57)	60-180 (57)	1Ø, 240VAC, 20A, 50/60Hz	720 (20388)	1/2" fnpt (12.7)	1/2" (12.7)	51.39x23.32x22.48 (1305x592x571)	340 (154)
6M23/ R-MSG063	14.3 (270)	18.5 (350)	8%	180 (84)	90-270 (84)	1Ø, 240VAC, 30A, 50/60Hz	1440 (40776)	1/2" fnpt (12.7)	1/2" (12.7)	51.39x55.2x22.48 (1305x1402x571)	625 (283)
6M24/ R-MSG064	19.0 (360)	22.2 (420)	8%	240 (114)	120-360 (114)	1Ø, 240VAC, 30A, 50/60Hz	1440 (40776)	1/2" fnpt (12.7)	1/2" (12.7)	51.39x55.2x22.48 (1305x1402x571)	635 (288)
9M23/ R-MSG093	21.4 (405)	27.8 (525)	8%	270 (127)	135-405 (127)	1Ø, 240VAC, 40A, 50/60Hz	2160 (61164)	1/2" fnpt (12.7)	1/2" (12.7)	51.39x76.6x22.48 (1305x1946x571)	915 (415)
9M24/ R-MSG094	28.6 (540)	33.3 (630)	8%	360 (170)	180-540 (170)	1Ø, 240VAC, 40A, 50/60Hz	2160 (61164)	1/2" fnpt (12.7)	1/2" (12.7)	51.39x76.6x22.48 (1305x1946x571)	925 (420)

* Compression tube fitting.

Note: The 9M model is the largest single cabinet. Systems larger than a single 9M are comprised of modular combinations of 6M and 9M cabinets. Multiple cabinets of the M Series may be combined in a variety of ways to create modular, redundant and flexible ozone generator systems larger than 1kg/h ozone per hour. There is virtually no end to the scalability of the M Series!

Operational Requirements

All M Series models have the following Operational Requirements:

- Electrical Requirement: 230V 50/60Hz, 1 phase, all models
- Minimum Feed Gas Pressure: 6 psi, 0.4 bar
- Clean, dry and well ventilated location
- A degree of protection from airborne particulate, moisture and dirt



6160 Egret Court
Benicia, California 94510
p: (707) 747.9600
f: (707) 747.9209
www.pacificozone.com