

## Partial Evoqua Forty-X Installation List



---

### Immaculata, PA

JOB NO.: D11733DC

MODEL NO.: E1403TLSS

No. FILTERS: 1

DATE INSTALLED: 7-08-08

REPRESENTATIVE: Riordan Materials

LOCATION: Malvern, PA

ENGINEER: N/A

#### Design Criteria

Peak Flow: 180 GPM

Average Flow: 180 GPM, intermittent from SBR

#### Influent

Max TSS: 20 ppm

Avg. TSS: 15 ppm

#### Effluent

Max. TSS: 10 ppm



#### Process Description:

One 40-X Disc Filter with three discs to treat wastewater from dual bath SBR. There is a 25,000 gal decant equalization tank with two 80 gpm pumps. The equipment is designed for 180 gpm and an estimated 20 mg/l TSS.

---

### Chadds Ford

JOB NO.: D11610DC

MODEL NO.: E1403TLSS

No. FILTERS: 1

DATE INSTALLED: 2-14-08

REPRESENTATIVE: Riordan Materials

#### Design Criteria

Peak Flow: 525 GPM

Average Flow: 75 GPM, intermittent from SBR

#### Influent

Max TSS: 45 ppm

Avg. TSS: 30 ppm

#### Effluent

Max. TSS: <5 ppm



#### Process Description:

Tertiary filtration of domestic SBR effluent wastewater. The filter operates intermittent based on the decant process of the SBR.

**Q-Chem Chemical-Qatar**

JOB NO.: I11611DC

MODEL NO.: E1403TLSS

No. FILTERS: 2

DATE INSTALLED: February 09

REPRESENTATIVE: N/A

LOCATION: Doha, State of Qatar

ENGINEER: WorleyParsons

LOCATION: Abu Dhabi, UAE

**Design Criteria**

Peak Flow: 154 GPM

Average Flow: 114 GPM

**Influent**

Max TSS: 30 ppm

Avg. TSS: 20 ppm

**Effluent**

Max. TSS: 10 ppm

**Process Description:**

Two 40-X Disc Filters Model 1403. One filter is to handle water from the plant's waste stream while the other is to handle wastewater from the plant's sanitary stream. The equipment was supplied with Explosion proof electrical components and Control Panels to be mounted remotely in a non-classified area.

**Yauco, Puerto Rico**

JOB NO.: D11613DC

MODEL NO.: E1418FLSS

No. FILTERS: 2

DATE INSTALLED: 2010

REPRESENTATIVE: Sani-Plant Co.

LOCATION: Yauco, Puerto Rico

CONTRACTOR: Venegas Construction

LOCATION: Ponce, Puerto Rico

**Design Criteria**

Peak Flow: 11.25 MGD

Average Flow: 4.5 MGD

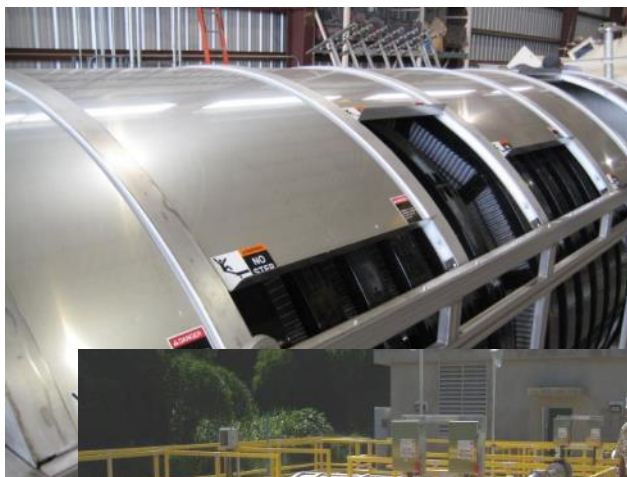
**Influent**

Max TSS: 30 ppm

Avg. TSS: 10 ppm

**Effluent**

Max. TSS: &lt;5 ppm

**Process Description:**

Two (2) Model 1418C Disc filter sold as part of a Evoqua package plant. This is standard Forty-X Disc Filter Model 1418 disc, Filter. Peak flow is 11.25 mgd, average flow is 4.5 mgd.

LOCATION: China

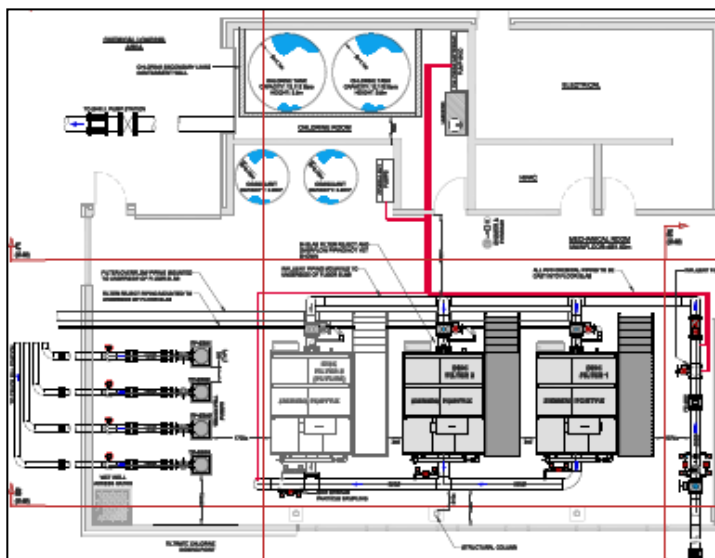
Max. TSS: <5 ppm

Six Model 1424 frame units.



ENGINEER: Urban Systems

Max. TSS: <5 ppm



Two Evoqua Forty X Disc Filters Model 1406. Designed by Evoqua and installed by the owner. Units are mirror image and are set side-by-side. Treating Effluent from an Lagoon SGAR process.



**Almand Branch**

JOB NO.: D11756DK

MODEL NO.: E1403TLSS

No. FILTERS: 2

DATE INSTALLED: 12-29-08

REPRESENTATIVE: Heyward

LOCATION: Rockdale County

ENGINEER: N/A

**CONTRACT OPERATOR: CJ Moreland****OFFICE: (706) 255-3643****Design Criteria**

Peak Flow: 1.2 MGD

Average Flow: 0.8 MGD

**Influent**

Max TSS: 15 ppm

Avg. TSS: 10 ppm

**Effluent**

Max. TSS: &lt;5 ppm

**Process Description:**

Two Evoqua Forty X Disc Filters Model 1403. Designed by Evoqua and installed by the owner. Units are mirror image and are set side-by-side. Treating Effluent from an RBC and Tow-Bro Clarifiers.

**FIJI**

JOB NO.: D11825DC

MODEL NO.: E1403TLSS

No. FILTERS: 1

DATE INSTALLED: January 09

REPRESENTATIVE: Evoqua Fiji

LOCATION: Fiji

ENGINEER: Masons Engineers

LOCATION: Auckland, NZ

**Design Criteria**

Peak Flow: .5 MGD

Average Flow: .25 MGD, intermittent flow

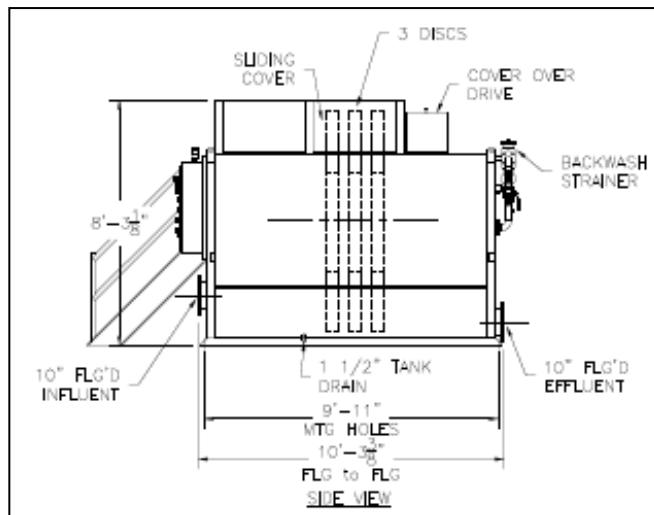
**Influent**

Max TSS: 20 ppm

Avg. TSS: 10 ppm

**Effluent**

Max. TSS: &lt;5 ppm

**Process Description:**

Filtration of a SBR effluent located at the FIJI Hotel. Flow rate is 625 m3/day but for only 16 hours a day. This equates to a rate of 39 m3/hr or 172 gpm.

**Kubd, Kuwait WWTP**

JOB NO.: D11617DK

MODEL NO.: E1424FLXS

No. FILTERS: 8

DATE INSTALLED: 8-2011

REPRESENTATIVE: Evoqua

LOCATION: Kubd, Kuwait

ENGINEER: KEO – Parsons JV

LOCATION: Kuwait

**Design Criteria**Peak Flow: 270,000 m<sup>3</sup>/d (71.3 MGD)Average Flow: 180,000 m<sup>3</sup>/d (47.6 MGD)**Influent**

Max TSS: 20 ppm

Avg. TSS: 15 ppm

**Effluent**

Max. TSS: &lt;5 ppm

**Process Description:**

Eight 40-X Disc Filters Model 1424 each unit populated with 24 disc units. These are framed units and constructed from AISI 316L stainless steel or suitable non-metallic materials. All welding conforms to the latest standards of the American Welding Society.

**Pickerington, OH**

JOB NO.: D11838DC

MODEL NO.: E1412TRSS

No. FILTERS: 3

DATE INSTALLED: 2-2010

REPRESENTATIVE: Sullivan &amp; Associates

LOCATION: Springfield, MA

ENGINEER: Stilson &amp; Associates, Inc.

LOCATION: Columbus, OH

**CONTACT: Dave Jackson****OFFICE: (614) 837-6470****Design Criteria**

Peak Flow: 11.5 MGD – using 3 filters

Average Flow: 3.2 MGD – using 2 filters

**Influent**

Max TSS: 20 ppm

Avg. TSS: 15 ppm

**Effluent**

Max. TSS: 10 ppm

**Process Description:**

Three Model 1412 Forty-X Disc Filters, each with 12 discs. These are our tank version for easy installation into an existing TBF basin. Supplied with a central main control panel with PLC that allowed networking of disc filters to the plant's SCADA. System supplied with access platforms and stairs that fit inside the existing basin.

**Kingman, AZ**

JOB NO.: 1050 / 000142DF

MODEL NO.: E1406TLSS

No. FILTERS: 2

DATE INSTALLED: July 2010

REPRESENTATIVE: Applied Products

LOCATION: Kingman, AZ

ENGINEER: Brown &amp; Caldwell

LOCATION: Phoenix, AZ

**Design Criteria**

Peak Flow: 1 MGD

Average Flow: 1 MGD Consistent

**Influent**

Max TSS: 20 ppm

Avg. TSS: 15 ppm

**Effluent**

Max. TSS: 10 ppm

**Process Description:**

Two Model 1406 Forty-X Disc Filters, each with 06 discs. These are our framed version for easy installation into a new concrete tank. Supplied with a central main control panel with PLC that allowed networking of disc filters to the plant's SCADA. This system will be filtering a side stream on 1MGD for reuse.

**Dothan, AL**

JOB NO.: D11838DC

MODEL NO.: E1424FR&amp;LSS

No. FILTERS: 6

DATE INSTALLED: Dec. 2010

REPRESENTATIVE: Heyward Georgia

LOCATION: Dothan, AL

ENGINEER: Polyengineering

LOCATION: Dothan, AL

**Design Criteria**

Peak Flow: 39 MGD – using 3 filters

Average Flow: 12 MGD – using 6 filters

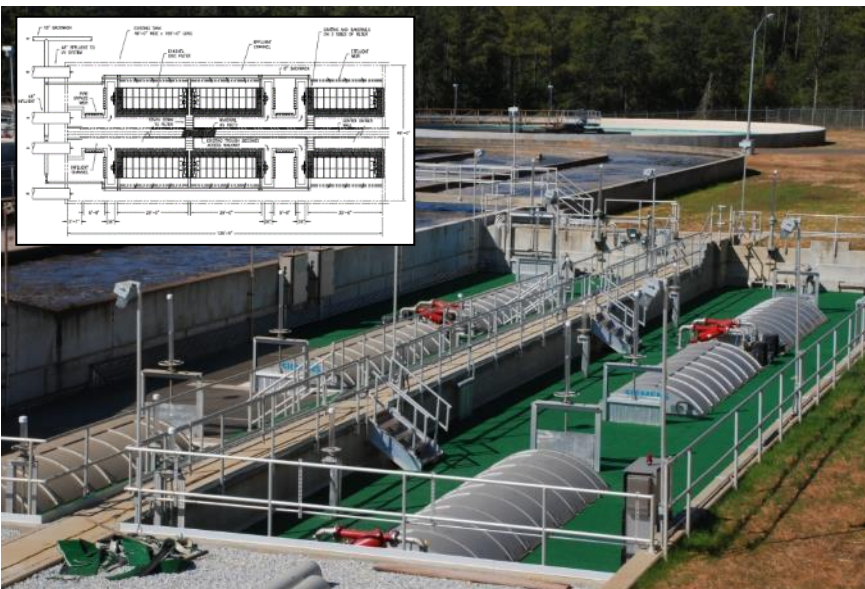
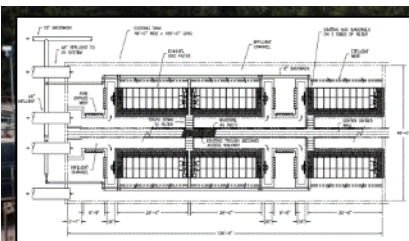
**Influent**

Max TSS: 30 ppm

Avg. TSS: 20 ppm

**Effluent**

Max. TSS: &lt;5 ppm

**Process Description:**

Six Model 1424 Forty-X Disc Filters, each with 24 discs. These are our frame version for installation into existing concrete tankage that was previously used as a rectangular clarifier. Supplied with a central main control panel with PLC that allowed networking of disc filters to the plant's SCADA. Each filter will also have a local control panel mounted rear the filter.



**Sycamore Creek WWTP**

JOB NO.: 090318-A0

MODEL NO.: E1418FLSS

No. FILTERS: 4

DATE INSTALLED: Dec. 2010

CONTACT: Jason Grooms

PHONE #: 513-793-1525

REPRESENTATIVE: N/A

LOCATION: Cincinnati, Ohio

ENGINEER: CH2MHill

LOCATION: Cincinnati, Ohio

CONTACT:

**Design Criteria**

Peak Flow: 18 MGD

Average Flow: 9 MGD

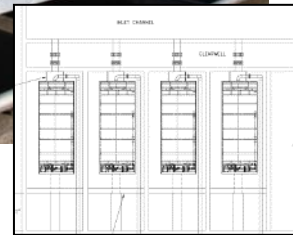
**Influent**

Max TSS: 30 ppm

Avg. TSS: 20 ppm

**Effluent**

Max. TSS: &lt;5 ppm

**Process Description:**

Four Model 1418 Forty-X Disc Filter with 18 discs in each unit. These are frame units and will be retro-fitted into existing concrete tankage. Supplied with a central main control panel with PLC that allowed networking of disc filter to the plant's SCADA.

**Panama City Beach, FL**

JOB NO.: 090156-A0

MODEL NO.: E1412FLSS

No. FILTERS: 4

DATE INSTALLED: October 2010

REPRESENTATIVE: Bruce Environmental

LOCATION: PC Beach, FL

ENGINEER: Baskerville-Donovan, Inc.

LOCATION: Panama City, FL

**Design Criteria**

Peak Flow: 10 MGD

Average Flow: 2.5 MGD

**Influent**

Max TSS: 20 ppm

Avg. TSS: 15 ppm

**Effluent**

Max. TSS: &lt;5 ppm

**Process Description:**

This is a Turn-Key project with Evoqua Field Services Group removing the existing equipment and installing four model 1412 Forty-X Disc Filter with 12 discs in each unit. These are frame units and will be retro-fitted into existing Traveling Bridge concrete tankage. Supplied with a central main control panel with PLC that allowed networking of disc filter to the plant's SCADA.

## League City, Texas

JOB NO.: 100075-A0

MODEL NO.: E1418TLSS

No. FILTERS: 2

DATE INSTALLED: April 2012

REPRESENTATIVE: EI2 Houston

LOCATION: League City, Texas

ENGINEER: CDM

LOCATION: Houston, Texas

CONTACT: Chitra Parameswar

### Design Criteria

Peak Flow: 6 MGD

Average Flow: 2 MGD

### Influent

Max TSS: 30 ppm

Avg. TSS: 10 ppm

### Effluent

Max. TSS: 10 ppm @ PDF

Max. TSS: <5 ppm @ ADF



### Process Description:

These Forty X Disc Filters are part of a plant upgrade for the City of League City, Texas. The Forty X Disc Filters will follow two 80' dia clarifiers and will discharge to UV Disinfection System.

## Pima County, AZ

JOB NO.: 100075-A1

MODEL NO.: E1424FLSS

No. FILTERS: 8

DATE INSTALLED: March 2013

REPRESENTATIVE: Applied Products

LOCATION: Pima County, AZ

ENGINEER: CH2MHill

LOCATION: Englewood, CO

### Design Criteria

Peak Flow: 32 MGD

Average Flow: 64 MGD

### Influent

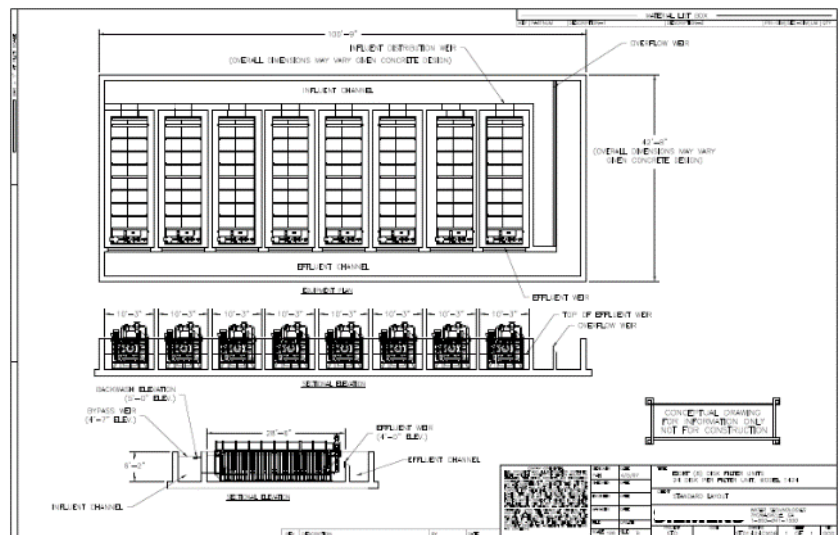
Max TSS: 20 ppm

Avg. TSS: 10 ppm

### Effluent

Max. TSS: 10 ppm @ PDF

Max. TSS: <5 ppm @ ADF



### Process Description:

These Forty X Disc Filters are part of a Evoqua Bio Flow Sheet solution for CH2MHill and Pima County, AR. In addition to the Forty X Disc Filter the Evoqua Bio Flow Sheet solution included PrimeFloat and TowBro Clarifiers.



## Port St Joe, Florida

JOB NO.: 090157-B0

MODEL NO.: E1418TLSS

No. FILTERS: 2

DATE INSTALLED: 2-2012

REPRESENTATIVE: Bruce Environmental

LOCATION: Port St Joe, Florida

ENGINEER: Preble-Rish

LOCATION: Port St Joe, FL

### Design Criteria

Peak Flow: 3.74 MGD

Average Flow: 3 MGD

### Influent

Max TSS: 35 ppm

Avg. TSS: 20 ppm

### Effluent

Max. TSS: 10 ppm @ PDF

Max. TSS: <5 ppm @ ADF



### Process Description:

The two 18 disc filters are filtering lagoon effluent for water reuse.

## City of Lake Wales, FL

JOB NO.: 100220-A1

MODEL NO.: E1412TLSS

No. FILTERS: 2

DATE INSTALLED: August 2012

REPRESENTATIVE: Heyward, Inc

LOCATION: Lake Wales, FL

ENGINEER: Kimley-Horn and Associates, Inc

LOCATION: Lakeland and Ocala, FL

### Design Criteria

Peak Flow: 4.66 MGD

Average Flow: 2.19 MGD

### Influent

Max TSS: 20 ppm

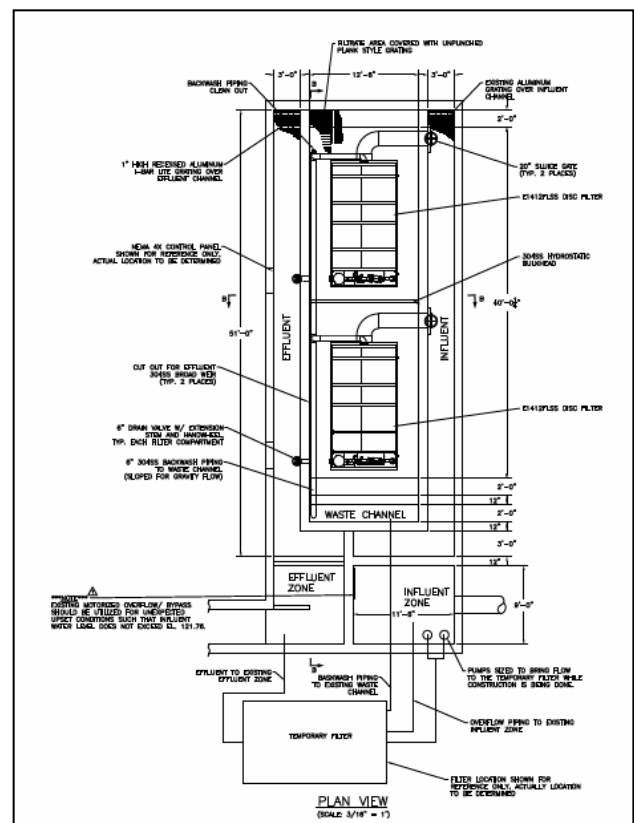
Avg. TSS: 15 ppm

### Effluent

Max. TSS: <5 ppm @ ADF

### Process Description:

The scope of work includes a new fine screen for the headworks, addition of two aeration rotors to the oxidation ditch, replace the two existing clarifier mechanisms with new mechanisms, conversion of an existing traveling bridge sand filter to disk filters, construction of a new 200,000 gallon



aerobic digester, and rehabilitation of an existing aerobic digester aeration system. The permitted treatment capacity of the WWTF will increase from 1.90 MGD to 2.19 MGD.

Air Liquide – Monclova, Mexico

JOB NO.: 110192-A0

MODEL NO.: E1406TLSS

No. FILTERS: 1

DATE INSTALLED: April 2012

REPRESENTATIVE: Evoqua Direct

LOCATION: Monclova, Mexico

ENGINEER: Air Liquide Engineering Staff

LOCATION: Houston, Texas

### Design Criteria

Side Stream Filter

Peak Flow: 1 MGD

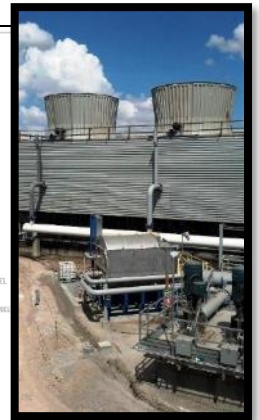
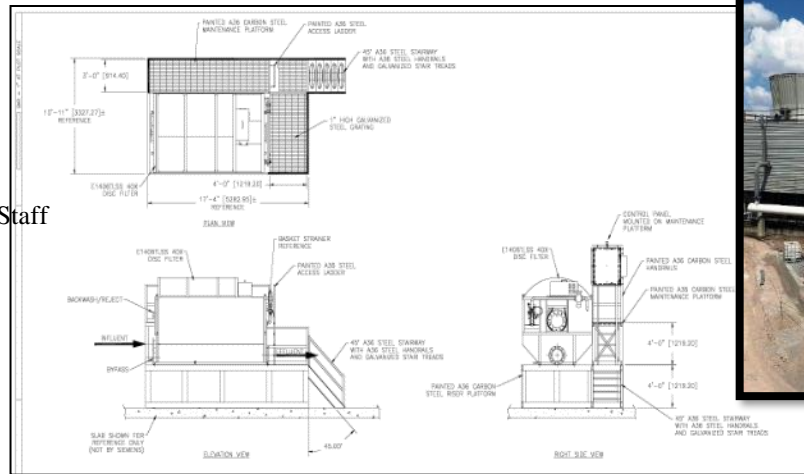
### Influent

Max TSS: 30 ppm

Avg. TSS: 20 ppm

### Effluent

Max. TSS: <5 mg/l



### Process Description:

The scope of work includes 1 (one) new side stream disc filter for designed for the filtration of secondary wastewater that will be used in a cooling tower. The filter will be provided on a platform that will elevate the filter above the cooling tower holding basin allowing the filter effluent to gravity flow into the basin. The elevated platform will be equipped with a maintenance platform for easy, safe access of the filter components.

S-Project

JOB NO.: 1010/011021

MODEL NO.: E1424FLXS

No. FILTERS: 8

DATE INSTALLED: 2011

REPRESENTATIVE: Evoqua Direct

LOCATION: Korea

ENGINEER: Samsung Engineering

LOCATION: Seoul, Korea

### Design Criteria

Peak Flow: 190,000 m3d

Max Day Flow: 143,000 m3d

Average Day Flow: 100,000 m3d

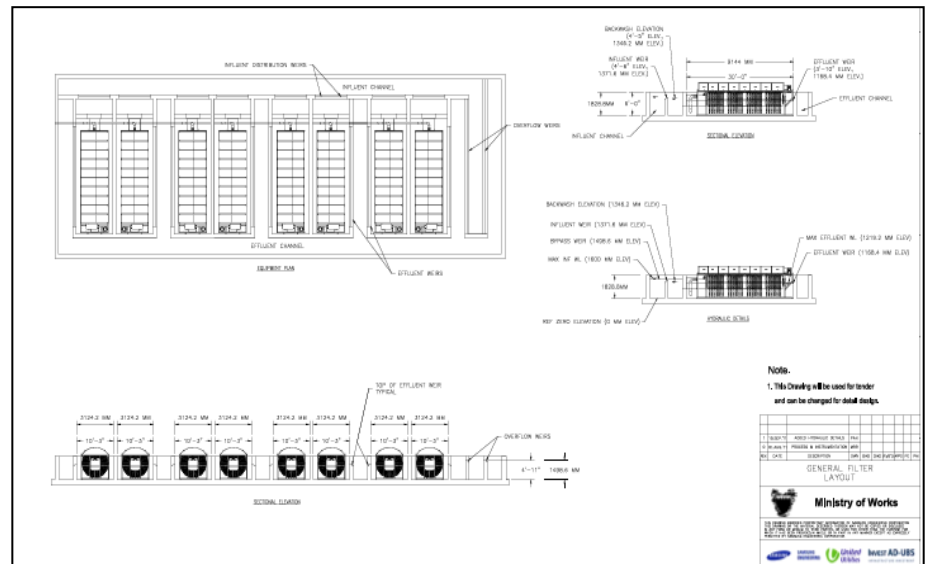
### Influent

Max TSS: 20 ppm

Avg. TSS: 15 ppm

### Effluent

Max. TSS: <10 mg/l

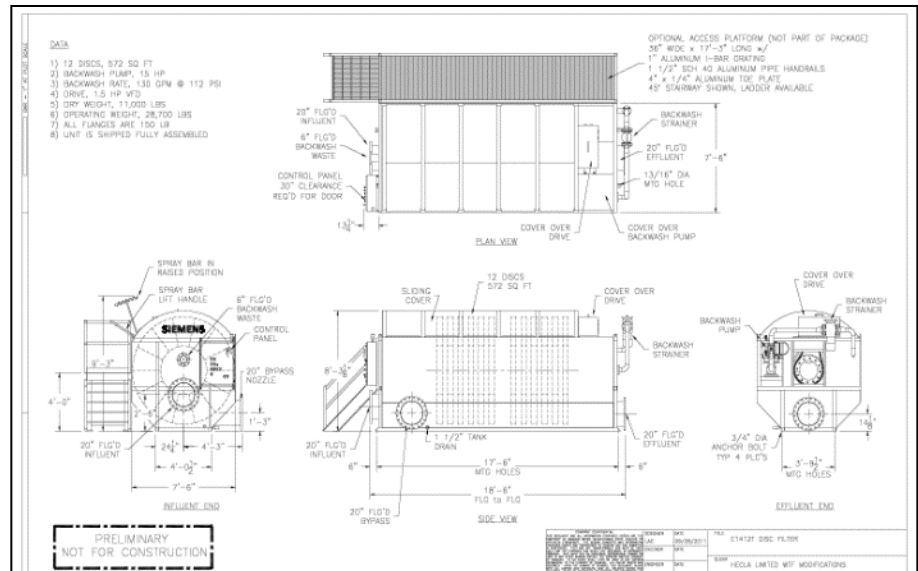


### Process Description:

Part of a Evoqua BioFlowSheet offering where Evoqua provided the SBR biological process and the Forty X Disc Filter Equipment as part of a total system solution. The Evoqua Forty-X scope consisted of eight 316 Stainless Steel, 24 disc filters, packaged for overseas shipment.

LOCATION: Billings, Montana

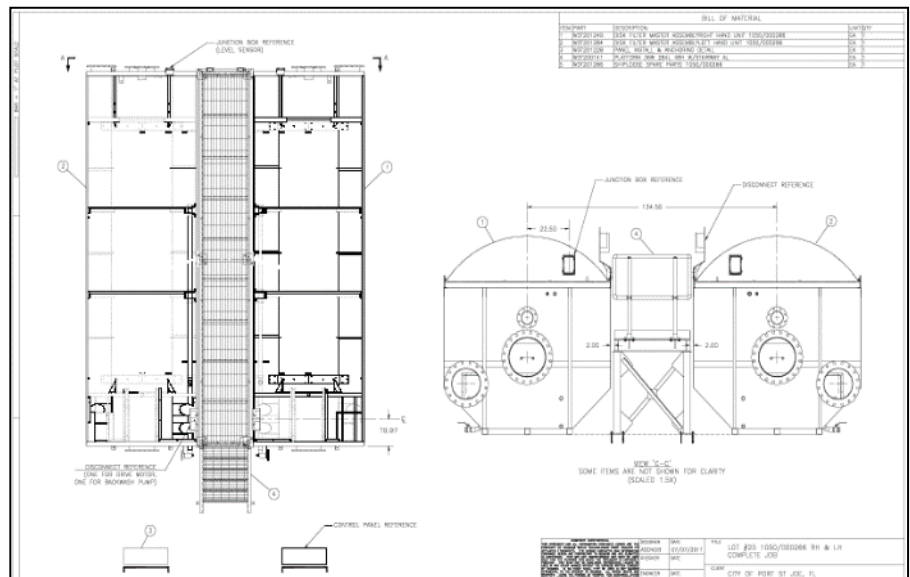
Max. TSS: <5 mg/l



The Disc Filter will receive effluent water from parallel inclined plate clarifiers that is settling out solids from a washing operation within the plant. The main purpose of the filters is to insure that the suspended solids levels in the water do not exceed permitted discharge limits.

LOCATION: Corvallis, OR

Max. TSS:  $\leq 5$  mg/l



The Disc Filter will receive effluent water from a domestic wastewater with secondary treatment and clarification. Each filter is designed to operate on a continuous basis and will operate while receiving various flows.



Flagg Creek

JOB NO.: 110107-A0

MODEL NO.: E1418TLSS

No. FILTERS: 8 (1 standby)

DATE INSTALLED: 2012

REPRESENTATIVE:

LOCATION: Burr Ridge, IL 60527

ENGINEER: AECOM

LOCATION: Chicago, IL

#### Design Criteria

Peak Flow: 37.5MGD

Average Day Flow: 12MGD

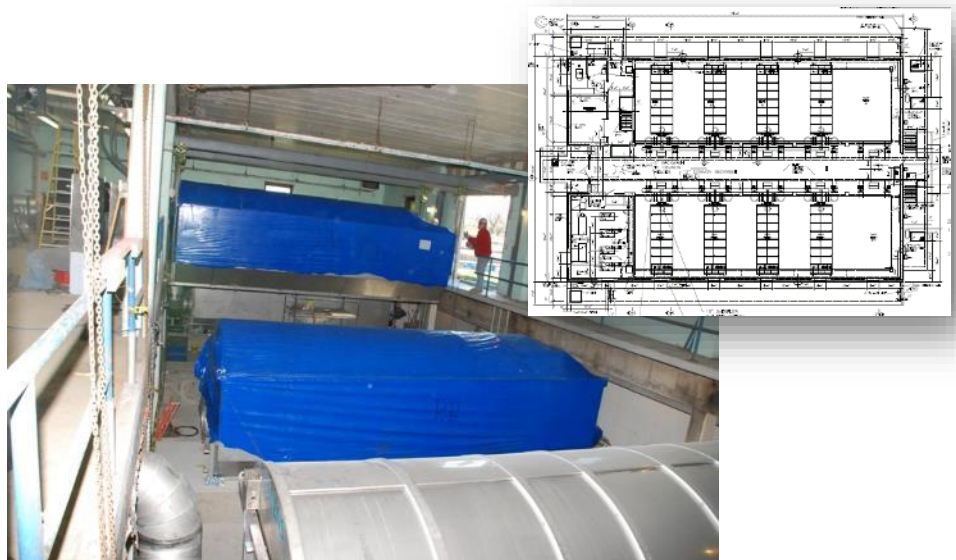
#### Influent

Max TSS: 15 ppm

Avg. TSS: 10 ppm

#### Effluent

Max. TSS: <5 mg/l



#### Process Description:

This is a Retrofit of an existing HydroClear Sand Filter. The Disc Filter will receive effluent water from a domestic wastewater with secondary treatment and clarification. Each filter is designed to operate on a continuous basis and will operate while receiving various flows. The effluent and bypass were custom designed to discharge through the bottom of the filter into the existing clear well.

Dorchester County

JOB NO.: 110301-A0

MODEL NO.: E1406TLSS

No. FILTERS: 2

DATE INSTALLED: January 2014

REPRESENTATIVE: Premier Water

LOCATION: North & South Carolina

ENGINEER: BP Barber

LOCATION: Chicago, IL

#### Design Criteria

Peak Flow: 4.5MGD

Average Day Flow: 1.8MGD

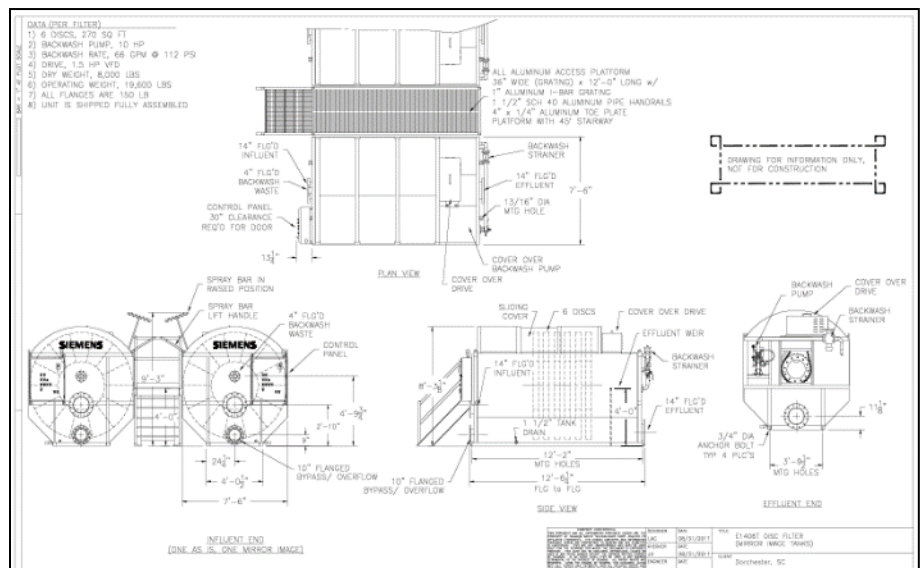
#### Influent

Max TSS: 20 ppm

Avg. TSS: 10 ppm

#### Effluent

Max. TSS: <5 mg/l



#### Process Description:

This Disc Filter System is part of a package by Evoqua which includes the Secondary Clarifier, Floating Surface Aerators, Floating Mixers and the Forty X Discs Filters. Each filter is designed to operate on a continuous basis and will operate while receiving various flows.

Clearwater Tissue

JOB NO.: 110289-A0

MODEL NO.: E1406TLSS

No. FILTERS: 1

DATE INSTALLED: December 2012

REPRESENTATIVE: Direct Sales

LOCATION:

ENGINEER: Cellu Tissue LLC

LOCATION: East Hartford, CT

### Design Criteria

Peak Flow: 500GPM

Average Day Flow: 250GPM

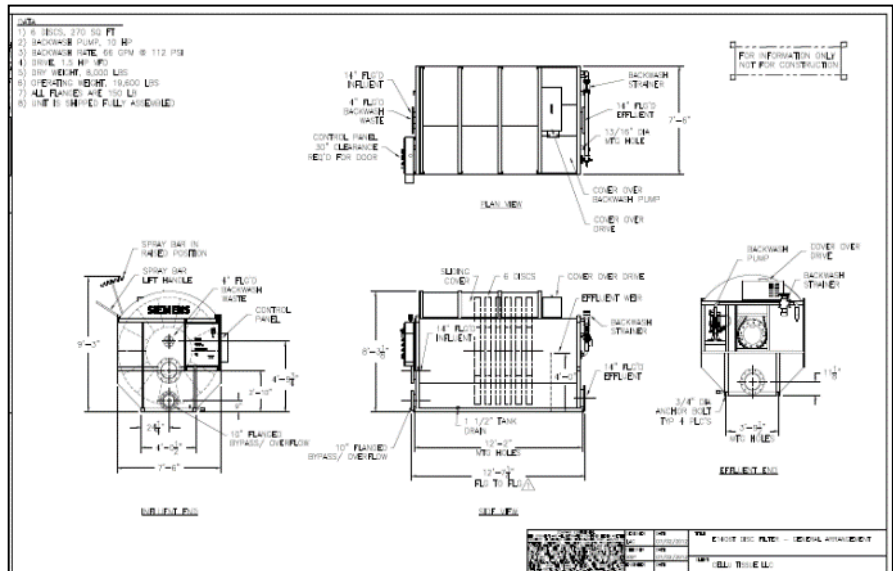
### Influent

Max TSS: 20 ppm

Avg. TSS: 10 ppm

### Effluent

Max. TSS: <5 mg/l



### Process Description:

This Disc Filter System is used by a tissue mill to filter the white water off the tissue making process. The disc filter allows the mill to reuse the water within the production process.

Mount Dora, FL

JOB NO.: 120093

MODEL NO.: E1406TLSS

No. FILTERS: 1

DATE INSTALLED: July 2013

REPRESENTATIVE: Heyward Florida

LOCATION: Mount Dora, FL

ENGINEER: Evoqua

LOCATION:

### Design Criteria

Peak Flow: 2.4MGPD

Average Day Flow: 1.2MGPD

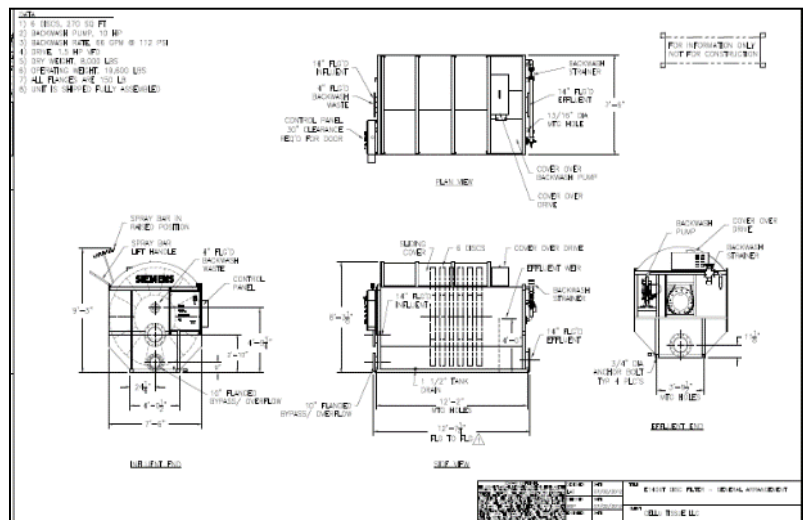
### Influent

Max TSS: 20 ppm

Avg. TSS: 10 ppm

### Effluent

Max. TSS: <5 mg/l



### Process Description:

This Forty X Disc Filter is providing solids reduction for permit discharge limits from an existing Secondary Effluent from an Activated Sludge biological plant.

Robbinsville, NC

JOB NO.: 2033/000137P.02

MODEL NO.: E1406TLSS

No. FILTERS: 2 (1 duty, 1 standby)

DATE INSTALLED: December 2013

REPRESENTATIVE: Premier Water

LOCATION: Charlotte, NC

ENGINEER: McGill Associates

LOCATION: Asheville, NC

#### Design Criteria

Peak Flow: 1.58MGPD

Average Day Flow: .63MGPD

#### Influent

Max TSS: 20 ppm

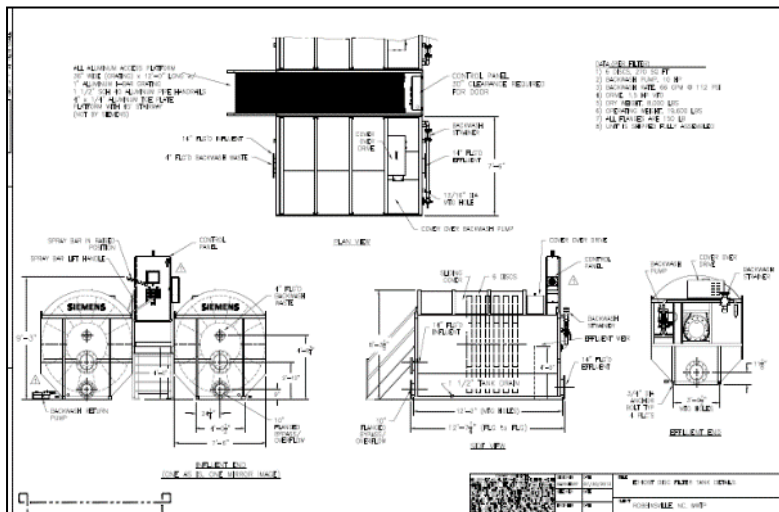
Avg. TSS: 10 ppm

#### Effluent

Max TSS: <5 mg/l

#### Process Description:

**This Disc Filter System follows a Evoqua Davco Field Erected Treatment Plant for the Municipality of Robbinsville, NC. The Forty X Disc Filter provides effluent polishing.**



Barnesville, GA

JOB NO.: 110287

MODEL NO.: E1418FLSS

No. FILTERS: 2 (1 duty, 1 standby)

DATE INSTALLED: December 2013

SITE CONTACT: Brandon Lewis – ESG Operations, Inc.

PHONE #: 770-358-0314

REPRESENTATIVE: Heyward Georgia

LOCATION: Atlanta, GA

ENGINEER: Stevenson & Palmer Engineering

LOCATION: Smyrna, GA

#### Design Criteria

Peak Flow: 6MGPD

Average Day Flow: 2.4MGPD

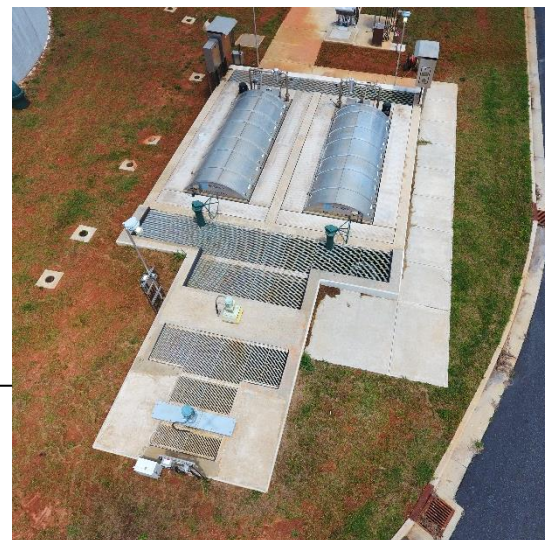
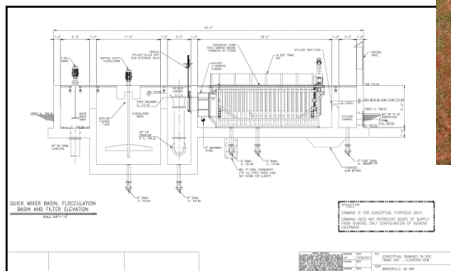
#### Influent

Max TSS: 20 ppm

Avg. TSS: 15 ppm

#### Effluent

Max. TSS: <5 mg/l



#### Process Description:

**This Forty X Disc Filter is providing solids reduction for permit discharge limits, including P reduction, from an existing Secondary Effluent from an Activated Sludge biological plant.**



## Air Liquide – Monclova, Mexico #2

JOB NO.: 140098-A2

MODEL NO.: E1406TLSS

No. FILTERS: 1

DATE INSTALLED: Sept. 2013

REPRESENTATIVE: Evoqua Direct

LOCATION: Monclova, Mexico

ENGINEER: Air Liquide Engineering Staff

LOCATION: Houston, Texas

### Design Criteria

Side Stream Filter

Peak Flow: 1.2 MGD

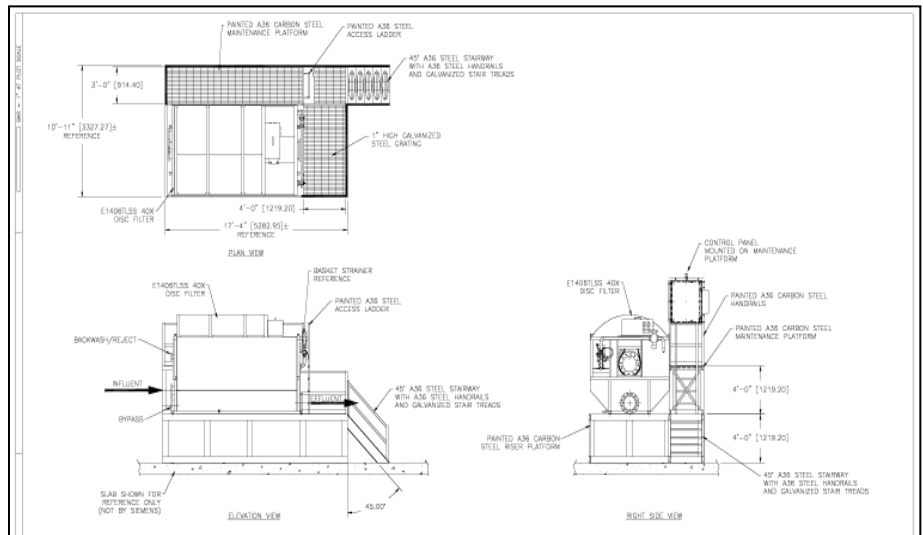
### Influent

Max TSS: 30 ppm

Avg. TSS: 20 ppm

### Effluent

Max. TSS: <5 mg/l



### Process Description:

The scope of work includes 1 (one) new side stream disc filter for designed for the filtration of secondary wastewater that will be used in a cooling tower. The filter will be provided on a platform that will elevate the filter above the cooling tower holding basin allowing the filter effluent to gravity flow into the basin. The elevated platform will be equipped with a maintenance platform for easy, safe access of the filter components.

## Dallas, GA

JOB NO.: 2033/000934

MODEL NO.: E1412FLSS

No. FILTERS: 2 (1 duty, 1 standby)

DATE INSTALLED: March 2016

REPRESENTATIVE: Heyward Georgia

LOCATION: Atlanta, GA

ENGINEER: Stevenson & Palmer Engineering

LOCATION: Smyrna, GA

### Design Criteria

Peak Flow: 3.75MGPD

Average Day Flow: 1.5MGPD

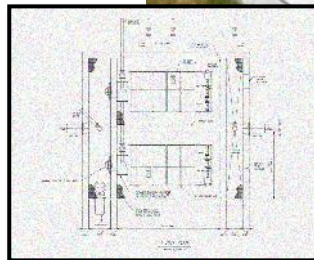
### Influent

Max TSS: 15 ppm

Avg. TSS: 10 ppm

### Effluent

Max. TSS: <5 mg/l



### Process Description:

This Forty X Disc Filter is part of a total plant design and will be providing solids reduction for permit discharge limits from the new Activated Sludge biological plant. The Forty X filters will receive flow from the secondary clarification.

Goodyear, AZ

JOB NO.: 140056-A0

MODEL NO.: E1415FLSS

No. FILTERS: 3 (2 duty, 1 standby)

DATE INSTALLED: Feb 2015

REPRESENTATIVE: Misco

LOCATION: Goodyear, AZ

ENGINEER: Water Works Engineering

LOCATION: Scottsdale, AZ

**Design Criteria**

Peak Flow: 12.7MGPD

Average Day Flow: 6MGPD

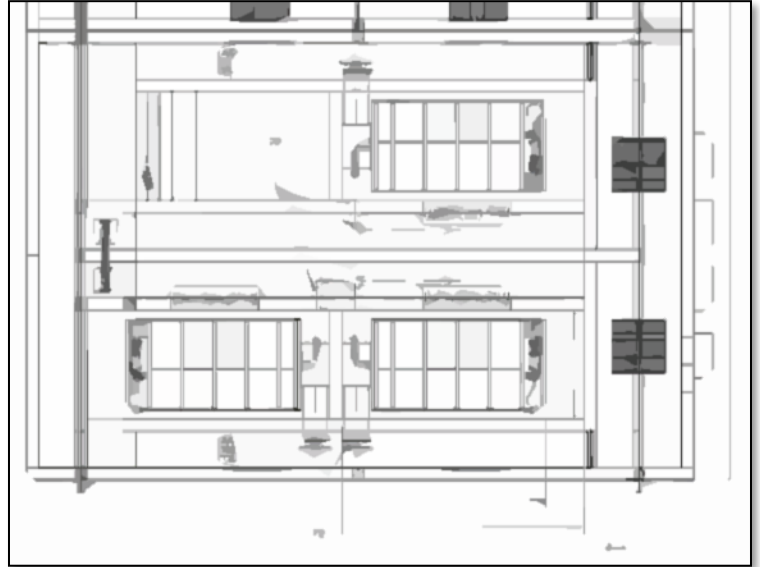
**Influent**

Max TSS: 25 ppm

Avg. TSS: 15 ppm

**Effluent**

Max. TSS: <5 mg/l



**Process Description:**

**This is a retrofit of existing Traveling Bridge Filters with the Forty X Disc Filter.**

Pigeon Forge, TN

JOB NO.: 110121-C0

MODEL NO.: E1418TLSS

No. FILTERS: 3 (2 duty, 1 standby)

DATE INSTALLED: February 2015

REPRESENTATIVE: Southern Sales Company, Inc.

LOCATION: Pigeon Forge, TN WWTP

ENGINEER: SSR Engineers

LOCATION: Nashville, TN

**Design Criteria**

Peak Flow: 15MGPD

Average Day Flow: 6MGPD

**Influent**

Max TSS: 20 ppm

Avg. TSS: 10 ppm

**Effluent**

Max. TSS: <5 mg/l



**Process Description:**

**This is a new wastewater treatment plant using the Evoqua – JetTech SBR for the biological treatment. The Forty X Disc Filters are receiving the SBR effluent and reducing the TSS to below 5mg/l.**

Robesonia Wernersville Municipal  
 JOB NO.: 120162-B0  
 MODEL NO.: E1412TLSS  
 No. FILTERS: 2 (1 duty, 1 standby)  
 DATE INSTALLED: May 2016  
 REPRESENTATIVE: Riordan Materials  
 LOCATION: Wernersville, PA 19565  
 ENGINEER: SSM Group  
 LOCATION: Reading, PA 19610

#### Design Criteria

Peak Flow: 4.8MGPD

Average Day Flow: 2.4MGPD

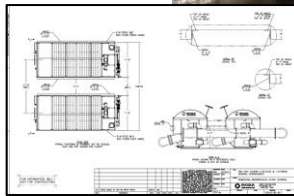
#### Influent

Max TSS: 20 ppm

Avg. TSS: 10 ppm

#### Effluent

Max. TSS: <5 mg/l



#### Process Description:

**Replacement of existing steel Traveling Bride Sand Filters. Project consisted on filter design and layout within the existing facility.**

Scott Air Force Base  
 JOB NO.: 140124-A2  
 MODEL NO.: E1412TLSS  
 No. FILTERS: 2 (1 duty, 1 standby)  
 DATE INSTALLED: Jan 2017  
 REPRESENTATIVE: Ressler & Associates LLC.  
 LOCATION: Pigeon Forge, TN WWTP  
 ENGINEER: SSR Engineers  
 LOCATION: Nashville, TN

#### Design Criteria

Peak Flow: 3MGPD

Average Day Flow: 1.16MGPD

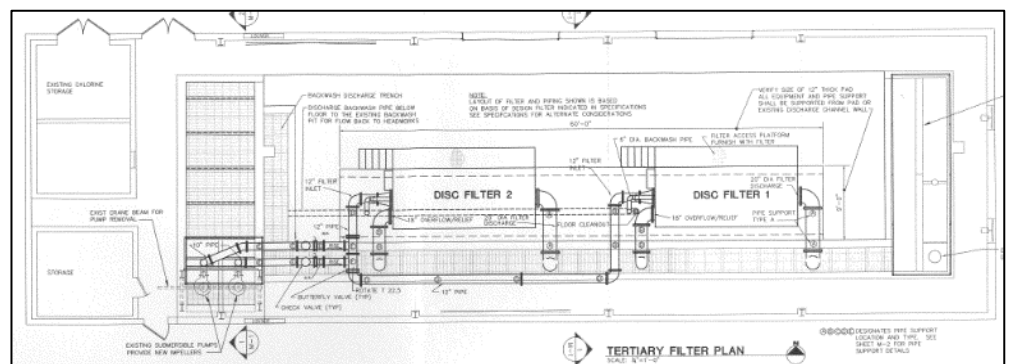
#### Influent

Max TSS: 30 ppm

Avg. TSS: 12 ppm

#### Effluent

Max. TSS: <5 mg/l



#### Process Description:

**Replacement of existing traveling bridge filters to achieve an increased plant capacity.**



Marathon, FL Area 3 & 4

JOB NO.: 160237-A0

MODEL NO.: E1403TLSS

No. FILTERS: 2

DATE INSTALLED: June 2017

REPRESENTATIVE: Heyward FL

LOCATION: Marathon, FL

ENGINEER: Weiler Engineering Corporation

LOCATION: Marathon, FL

### Design Criteria

Peak Flow: 1.2MGPD

Average Day Flow: .6MGPD

### Influent

Max TSS: 20 ppm

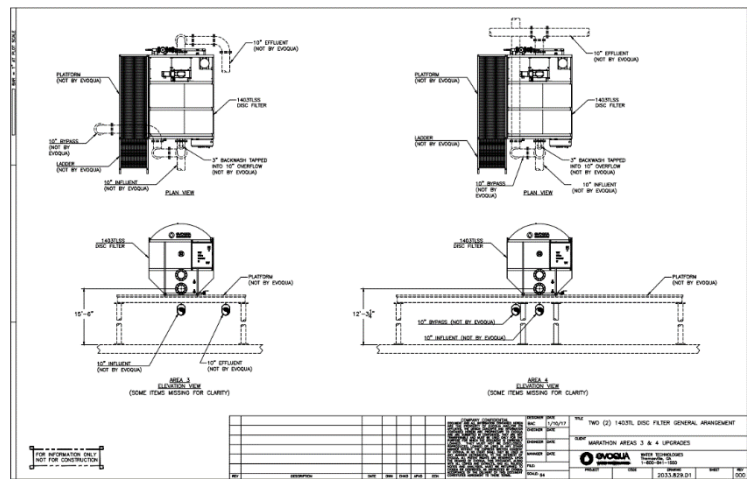
Avg. TSS: 10 ppm

### Effluent

Max. TSS: <5 mg/l

### Process Description:

**Plant expansion including a new Evoqua (32' diameter X 16'6" high) Ring Steel Field Erected Influent EQ Tank and accessories.**



Russell Park

JOB NO.: 160211-A0

MODEL NO.: E1402TLSS

No. FILTERS: 2

DATE INSTALLED: Feb 2017 - Startup March 17

REPRESENTATIVE: BissNuss, Inc.

LOCATION: Geauga County, OH

ENGINEER: GPD Group

LOCATION: Columbus, OH

### Design Criteria

Peak Flow: 1.2MGPD

Average Day Flow: .6MGPD

### Influent

Max TSS: 30 ppm

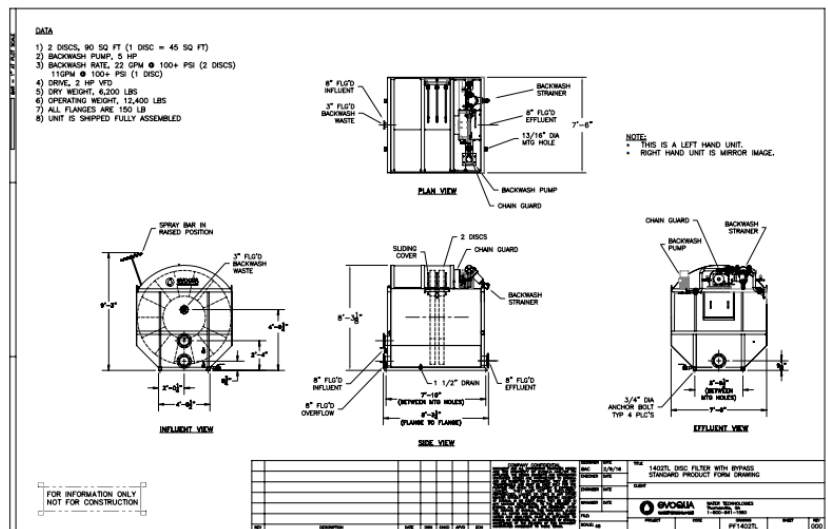
Avg. TSS: 15 ppm

### Effluent

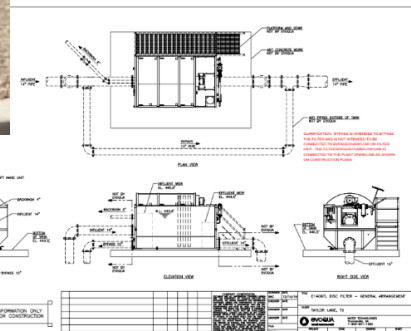
Max. TSS: <5 mg/l

### Process Description:

**Renovation of the WWTP in Russell, OH. Addition of new Forty-X Disc Filter.**



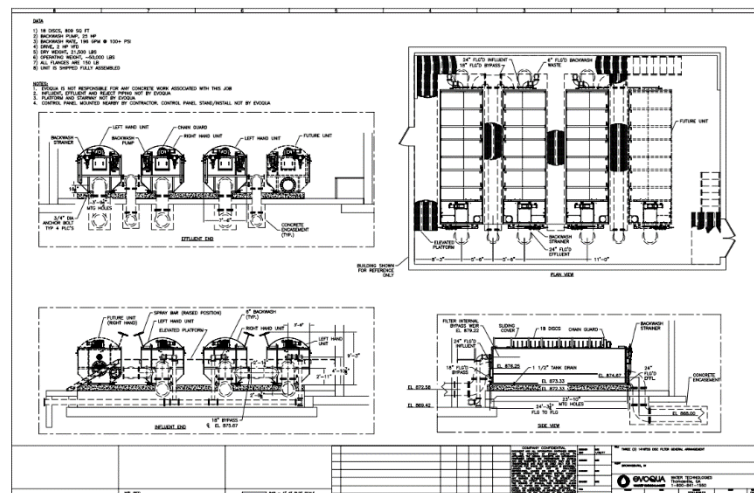
Taylor Lane  
 JOB NO.: 170009-A0  
 MODEL NO.: E1406TLSS  
 No. FILTERS: 1  
 DATE INSTALLED: July 2017  
 REPRESENTATIVE: EI2  
 LOCATION: Austin, TX  
 ENGINEER: Raba Kistner Consultants  
 LOCATION: Austin, TX



**Design Criteria**  
 Peak Flow: .4MGPD  
 Average Day Flow: .1MGPD  
**Influent**  
 Max TSS: 40 ppm  
 Avg. TSS: 20 ppm  
**Effluent**  
 Max. TSS: <5 mg/l

**Process Description:**  
 New WWTP construction for a 30-inch wastewater interceptor between FM 973 and Taylor Lane. The new facility will include a Forty-X Disc Filter.

Brownsburg, IN  
 JOB NO.: 150264-A1  
 MODEL NO.: E1418TLSS  
 No. FILTERS: 3  
 DATE INSTALLED: August 2017 Under Construction  
 REPRESENTATIVE: Henry P. Thompson Company  
 LOCATION: Brownsburg, IN  
 ENGINEER: Arcadis U.S., Inc.  
 LOCATION: Indianapolis, IN



**Design Criteria**  
 Peak Flow: 15MGPD  
 Average Day Flow: 5.2MGPD  
**Influent**  
 Max TSS: 15 ppm  
 Avg. TSS: 10 ppm  
**Effluent**  
 Max. TSS: <5 mg/l

**Process Description:**  
 Brownsburg WWTP expansion from an average daily flow of 3.5MGD to 5.25MGD. The expansion include the installation of three 18 disc Forty-X Disc Filters.

Onslow, NC (ONWASA)

JOB NO.: 110290-A4

MODEL NO.: E1406TLSS

No. FILTERS: 2

DATE INSTALLED: Nov 2014

CONTACT: Mark Young

PHONE #: 910-937-7570

REPRESENTATIVE: Premier Water

LOCATION: Onslow County, NC

ENGINEER: McKim & Creed.

LOCATION: Raleigh, NC

#### Design Criteria

Peak Flow: 2MGPD

Average Day Flow: 1MGPD

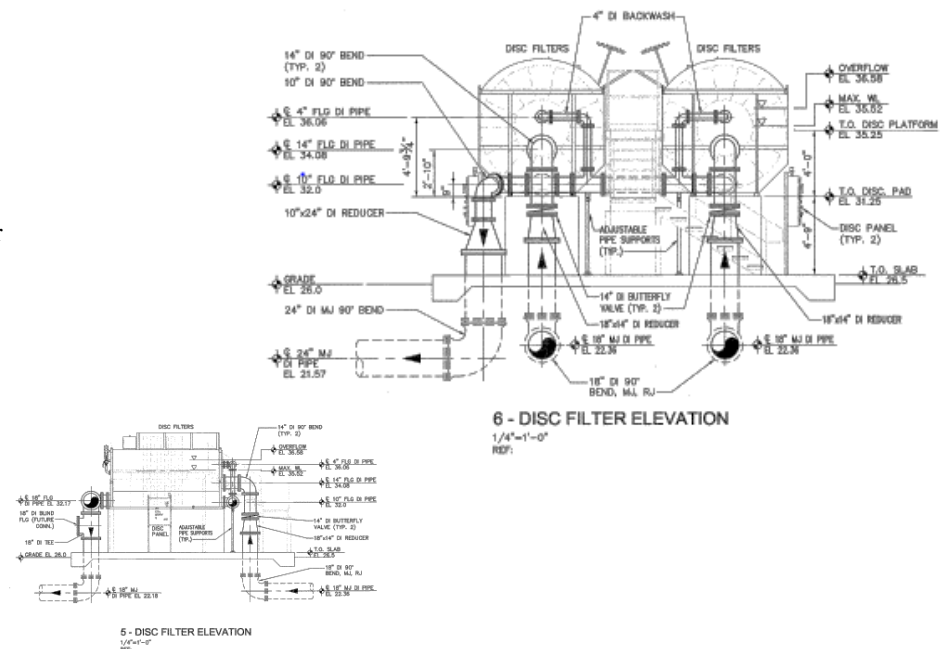
#### Influent

Max TSS: 30 ppm

Avg. TSS: 15 - 20 ppm

#### Effluent

Max. TSS: <5 mg/l



#### Process Description:

Basis of Design for the new facility utilizing Evoqua's SBR process technology followed by the Forty X Disc Filter. The proposed WRF is designed as a 2.0 MGD facility but will be permitted for 1.0 MGD effluent disposal capacity.

Windham, OH

JOB NO.: 2033-000907

MODEL NO.: E1406TLSS

No. FILTERS: 2

DATE INSTALLED: Dec 2017

CONTACT:

PHONE #:

REPRESENTATIVE: BissNuss

LOCATION: Village of Windham, OH

ENGINEER: CT Consultants

LOCATION: Mentor, OH

#### Design Criteria

Peak Flow: 6MGPD

Average Day Flow: 2MGPD

#### Influent

Max TSS: 10 ppm

Avg. TSS: 20 ppm

#### Effluent

Max. TSS: <5 mg/l



#### Process Description:

Replacement of DAVCO traveling bridge filters that were install during construction of the plant.





Hays, KS  
 JOB NO.: 2033/1015  
 MODEL NO.: E1418TLSS  
 No. FILTERS: 1  
 DATE INSTALLED:  
 CONTACT:  
 PHONE #:  
 REPRESENTATIVE:  
 LOCATION:  
 ENGINEER:  
 LOCATION:

### Design Criteria

Peak Hourly Flow: 7.5MGPD  
 Average Day Flow: 2.5MGPD

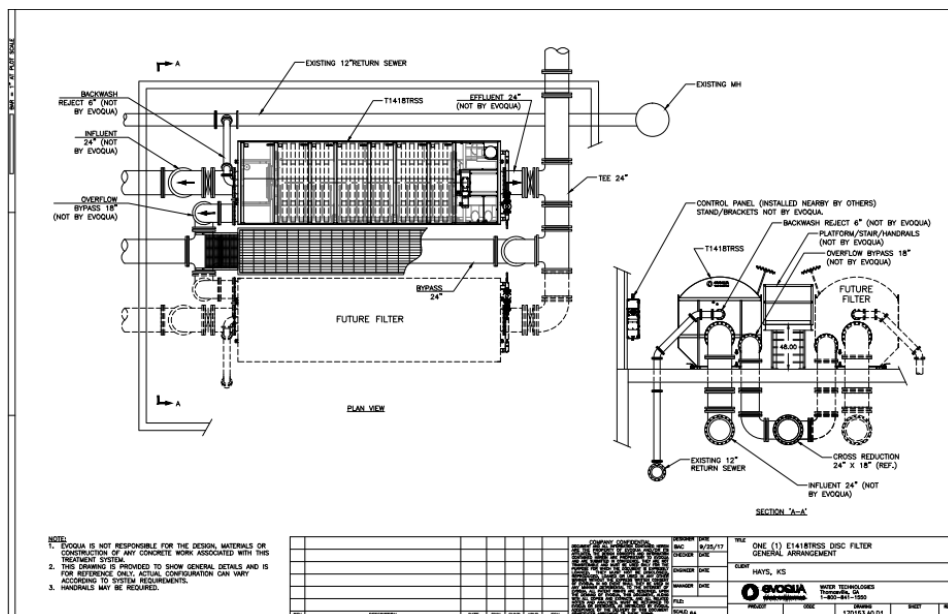
### Influent

Max TSS: 12 ppm

Avg. TSS: 10 ppm

### Effluent

Max. TSS: <5 mg/l



### Process Description:

Replacement of sand filters that were install during construction of the plant.