

HEADER NOT INCLUDED IN EWT SCOPE.
To be provided as per drawing (696383)

TOP VIEW

LENGTH 'L' ± 5mm [3/16 in] (BETWEEN LIFTING PLATES)

65 mm [2 5/8 in]

310 mm [12 1/8 in] TYP.

AIR INLET
3" ADAPTOR KAMLOCK

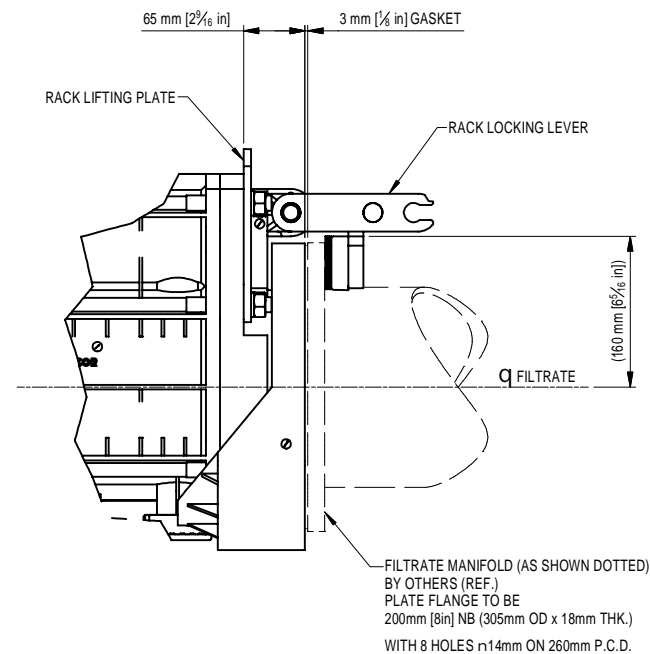
1095 mm [43 1/8 in]

65 mm [2 5/8 in]

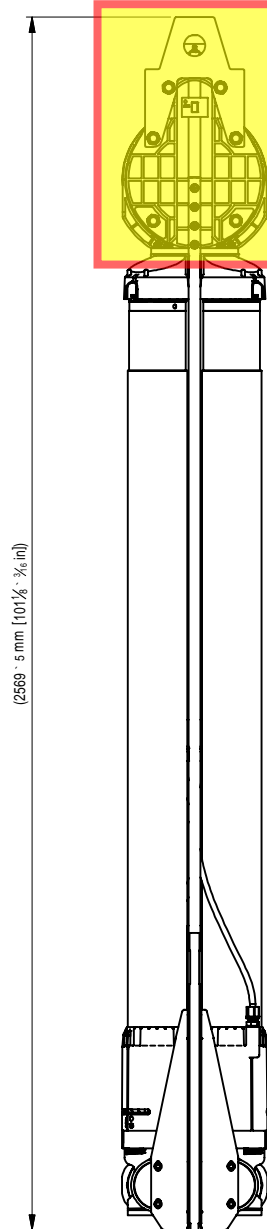
DETAIL 1
(SHEET 2)

Q FILTRATE

FILTRATE MANIFOLD
BY OTHERS (REF.)



DETAIL 1
(FRONT ELEVATION ON SHEET 1)



END VIEW

A
(SHEET 2)

FRONT ELEVATION
(9 HEADPIECE ASSEMBLY SHOWN)

ISSUE NO	DATE	DRN	ZONE REF.	DESCRIPTION OF CHANGE	CHKD	APVD
1	05/04/2017	MB		PRELIMINARY ISSUE	JL	JWP
0	05/04/2017	MB		ORIGINAL		

DIMENSIONS IN MILLIMETRES
DRAWN TO AS1100
DO NOT SCALE
IF IN DOUBT ASK

COMPANY CONFIDENTIAL
THIS DOCUMENT AND ALL INFORMATION CONTAINED HEREIN ARE THE PROPERTY OF EVOQUA AND / OR ITS AFFILIATES. THE DESIGN CONCEPTS AND INFORMATION CONTAINED HEREIN ARE PROPRIETARY TO EVOQUA AND ARE SUBMITTED IN CONFIDENCE. THEY ARE NOT TRANSFERABLE AND MUST BE USED ONLY FOR THE PURPOSE FOR WHICH THE DOCUMENT IS EXPRESSLY LOANED. THEY MUST NOT BE DISCLOSED, REPRODUCED, LOANED OR USED IN ANY OTHER MANNER WITHOUT THE EXPRESS WRITTEN CONSENT OF EVOQUA. IN NO EVENT SHALL THEY BE USED IN ANY MANNER DETRIMENTAL TO THE INTEREST OF EVOQUA. ALL INTELLECTUAL PROPERTY RIGHTS ARE RESERVED. UPON THE DEMAND OF EVOQUA, THIS DOCUMENT, ALONG WITH ALL COPIES AND EXTRACTS, AND ALL RELATED NOTES AND ANALYSES, MUST BE RETURNED TO EVOQUA OR DESTROYED, AS INSTRUCTED BY EVOQUA. ACCEPTANCE OF THE DELIVERY OF THIS DOCUMENT CONSTITUTES AGREEMENT TO THESE TERMS AND CONDITIONS.
Evoqua Water Technologies Membrane Systems Pty Ltd

DRAWN MB
CHECKED JL
APPROVED JWP
TOLERANCES
Linear : ± 2mm
OR AS NOTED

DATE 05/04/2017
DATE 27/04/2017
DATE 27/04/2017
TITLE MEMCOR³ CSII MEMRACK
GENERAL ARRANGEMENT
CLIENT MEMCOR GLOBAL STANDARD
EVOQUA WATER TECHNOLOGIES
Evoqua Water Technologies Membrane Systems Pty Ltd
ABN 36 166 784 694
15 Blackman Crescent, South Windsor
NSW 2756, Australia
Tel: +61245776800, Fax: +61245770078
SCALE N.T.S.
OR AS NOTED
DRAWING NUMBER MGS260-300
SHEET 1 OF 2 P/N
ISSUE 1