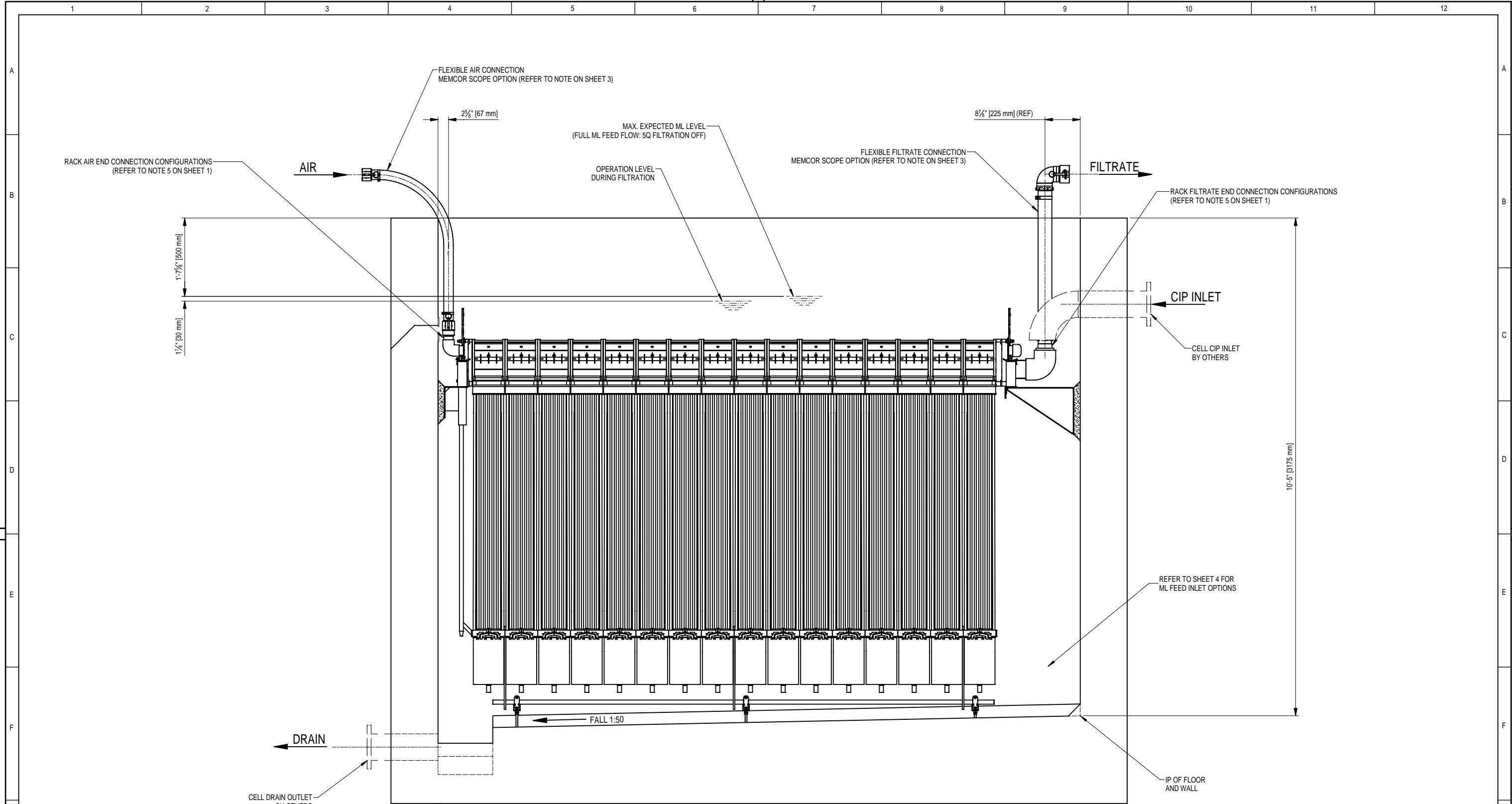


CELL CROSS SECTION
(RACK WITH AIR & FILTRATE CONNECTIONS AT SAME ENDS)

DIMENSIONS IN MILLIMETRES
DRAWN TO AS1100
DO NOT SCALE
IF IN DOUBT ASK

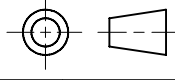
COMPANY CONFIDENTIAL THIS DOCUMENT AND ALL INFORMATION CONTAINED HEREIN ARE THE PROPERTY OF DuPont AND / OR ITS AFFILIATES. THE DESIGN CONCEPTS AND INFORMATION CONTAINED HEREIN ARE PROPRIETARY TO DuPont AND ARE SUBMITTED IN CONFIDENCE. THEY ARE NOT TRANSFERABLE AND MUST BE USED ONLY FOR THE PURPOSE FOR WHICH THE DOCUMENT IS EXPRESSLY LOANED. THEY MUST NOT BE DISCLOSED, REPRODUCED, LOANED OR USED IN ANY OTHER MANNER WITHOUT THE EXPRESS WRITTEN CONSENT OF DuPont. IN NO EVENT SHALL THEY BE USED IN ANY MANNER DETRIMENTAL TO THE INTEREST OF DuPont. ALL INTELLECTUAL PROPERTY RIGHTS ARE RESERVED. UPON THE DEMAND OF DuPont, THIS DOCUMENT, ALONG WITH ALL COPIES AND EXTRACTS, AND ALL RELATED NOTES AND ANALYSES, MUST BE RETURNED TO DuPont OR DESTROYED, AS INSTRUCTED BY DuPont. ACCEPTANCE OF THE DELIVERY OF THIS DOCUMENT CONSTITUTES AGREEMENT TO THESE TERMS AND CONDITIONS. © DuPont Memcor (Australia) Pty Ltd				DRAWN MB 12/10/2010	DATE 12/10/2010	TITLE MBR MEMPULSE MK2 RACK CELL PARAMETERS & GENERAL ARRANGEMENT		
				CHECKED JL 20/10/2010	DATE 20/10/2010	CLIENT MEMCOR GLOBAL STANDARD		
				APPROVED JWP 22/10/2010	DATE 22/10/2010	<div><div>MEMCOR®</div><div>a DuPont brand</div><div>DuPont Memcor (Australia) Pty Ltd</div><div>ABN 36 166 784 694</div><div>15 Blackman Crescent, South Windsor</div><div>NSW 2756, Australia</div></div>		
				TOLERANCES Linear : ± 2m = ± 1.0mm ≤ 6' = ± 1/32" > 2m ≤ 4m = ± 2.0mm > 6' ≤ 12' = ± 1/16" > 4m = ± 5.0mm > 12' = ± 3/16" Angular : ± 0.5° OR AS NOTED				
				SCALE 1:10 OR AS NOTED		DRAWING NUMBER MGS430-300 SHEET 1 OF 4 P/N		ISSUE M



CELL CROSS SECTION
RACK WITH AIR & FILTRATE CONNECTIONS AT OPPOSITE ENDS
(REFER TO SHEET 1 FOR CELL PARAMETER DETAILS)

ISSUE NO	DATE	DRN	ZONE REF.	DESCRIPTION OF CHANGE	CHKD	APVD
M	02/07/2020	MB		UPDATED TO DuPont TITLE BLOCK, ECR 7388	JL	YT
K	27/06/2017	MB		SHEET 4 (ML FEED OPTIONS) ADDED, ECR 7120	JMP	GJ
H	07/04/2016	MB		NOTES REVISED SHEETS 4 TO 8 OF THIS DRG. WERE MOVED TO DRG. MGS430-310, ECR 7033	JL	JWP
G	01/04/2015	JL		ADDED DUAL DIMENSIONS & REPLACED WITH EWT GLOBAL BORDER, ECR 6340	GJ	JWP

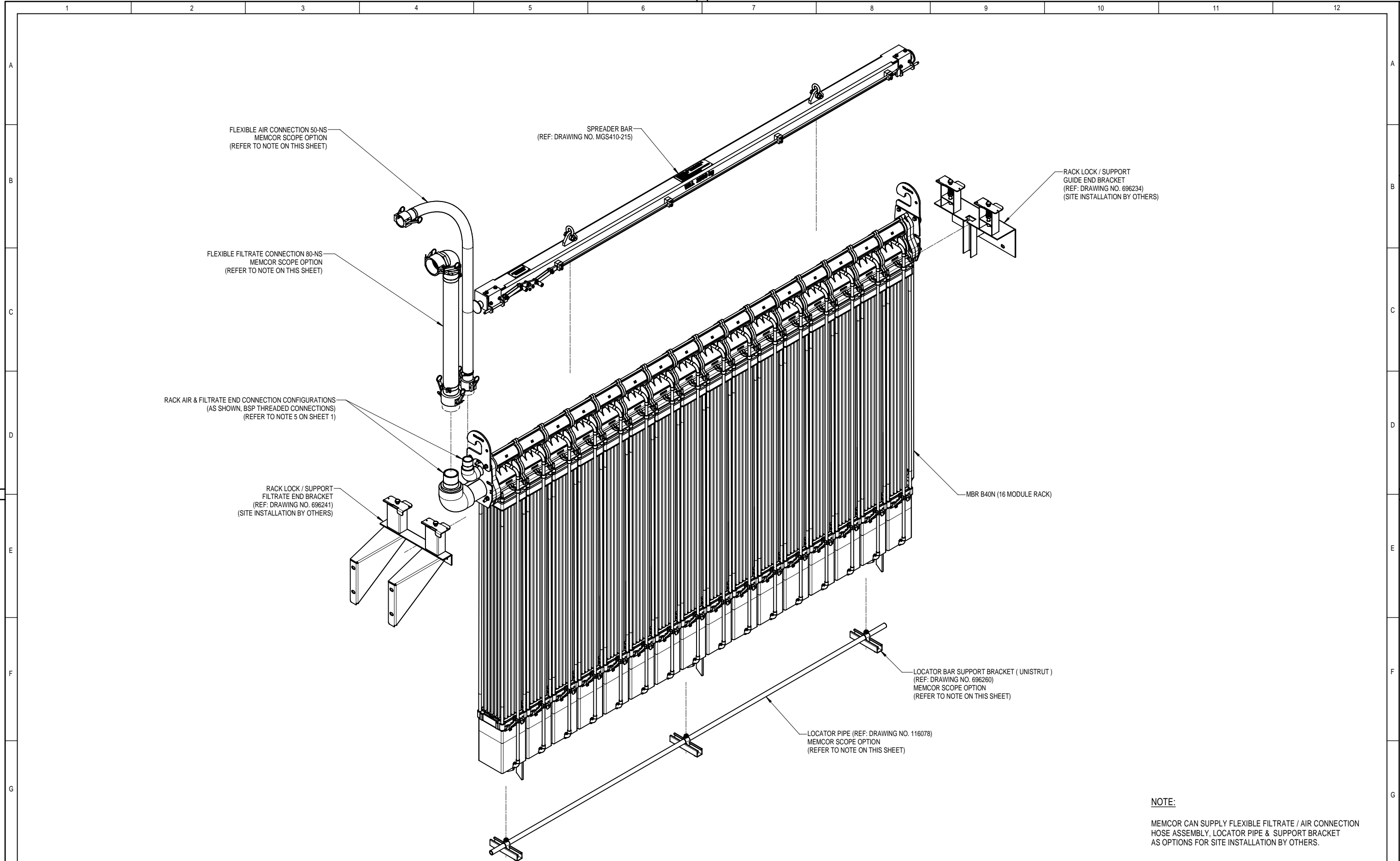
DIMENSIONS IN MILLIMETRES
DRAWN TO AS1100
DO NOT SCALE
IF IN DOUBT ASK



COMPANY CONFIDENTIAL
THIS DOCUMENT AND ALL INFORMATION CONTAINED HEREIN ARE THE PROPERTY OF DuPont AND / OR ITS AFFILIATES. THE DESIGN CONCEPTS AND INFORMATION CONTAINED HEREIN ARE PROPRIETARY TO DuPont AND ARE SUBMITTED IN CONFIDENCE. THEY ARE NOT TRANSFERABLE AND MUST BE USED ONLY FOR THE PURPOSE FOR WHICH THE DOCUMENT IS EXPRESSLY LOANED. THEY MUST NOT BE DISCLOSED, REPRODUCED, LOANED OR USED IN ANY OTHER MANNER WITHOUT THE EXPRESS WRITTEN CONSENT OF DuPont. IN NO EVENT SHALL THEY BE USED IN ANY MANNER DETRIMENTAL TO THE INTEREST OF DuPont. ALL INTELLECTUAL PROPERTY RIGHTS ARE RESERVED.
UPON THE DEMAND OF DuPont, THIS DOCUMENT, ALONG WITH ALL COPIES AND EXTRACTS, AND ALL RELATED NOTES AND ANALYSES, MUST BE RETURNED TO DuPont OR DESTROYED, AS INSTRUCTED BY DuPont. ACCEPTANCE OF THE DELIVERY OF THIS DOCUMENT CONSTITUTES AGREEMENT TO THESE TERMS AND CONDITIONS.
© DuPont Memcor (Australia) Pty Ltd

DRAWN MB	DATE 12/10/2010
CHECKED JL	DATE 20/10/2010
APPROVED JWP	DATE 22/10/2010
TOLERANCES Linear : 2m = ± 1.0mm ≤ 6' = ± 1/32" > 2m ≤ 4m = ± 2.0mm > 6' ≤ 12' = ± 1/16" > 4m = ± 5.0mm > 12' = ± 3/16" Angular : ± 0.5° OR AS NOTED	

TITLE MBR MEMPULSE MK2 RACK CELL PARAMETERS & GENERAL ARRANGEMENT	
CLIENT MEMCOR GLOBAL STANDARD	
MEMCOR® a DuPont brand	
DuPont Memcor (Australia) Pty Ltd ABN 36 166 784 694 15 Blackman Crescent, South Windsor NSW 2756, Australia	
SCALE N.T.S. OR AS NOTED	DRAWING NUMBER MGS430-300 SHEET 2 OF 4 P/N
ISSUE M	

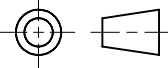


EXPLODED VIEW OF MBR MEMPULSE MK2 16 MODULE RACK

NOTE:
MEMCOR CAN SUPPLY FLEXIBLE FILTRATE / AIR CONNECTION
HOSE ASSEMBLY, LOCATOR PIPE & SUPPORT BRACKET
AS OPTIONS FOR SITE INSTALLATION BY OTHERS.

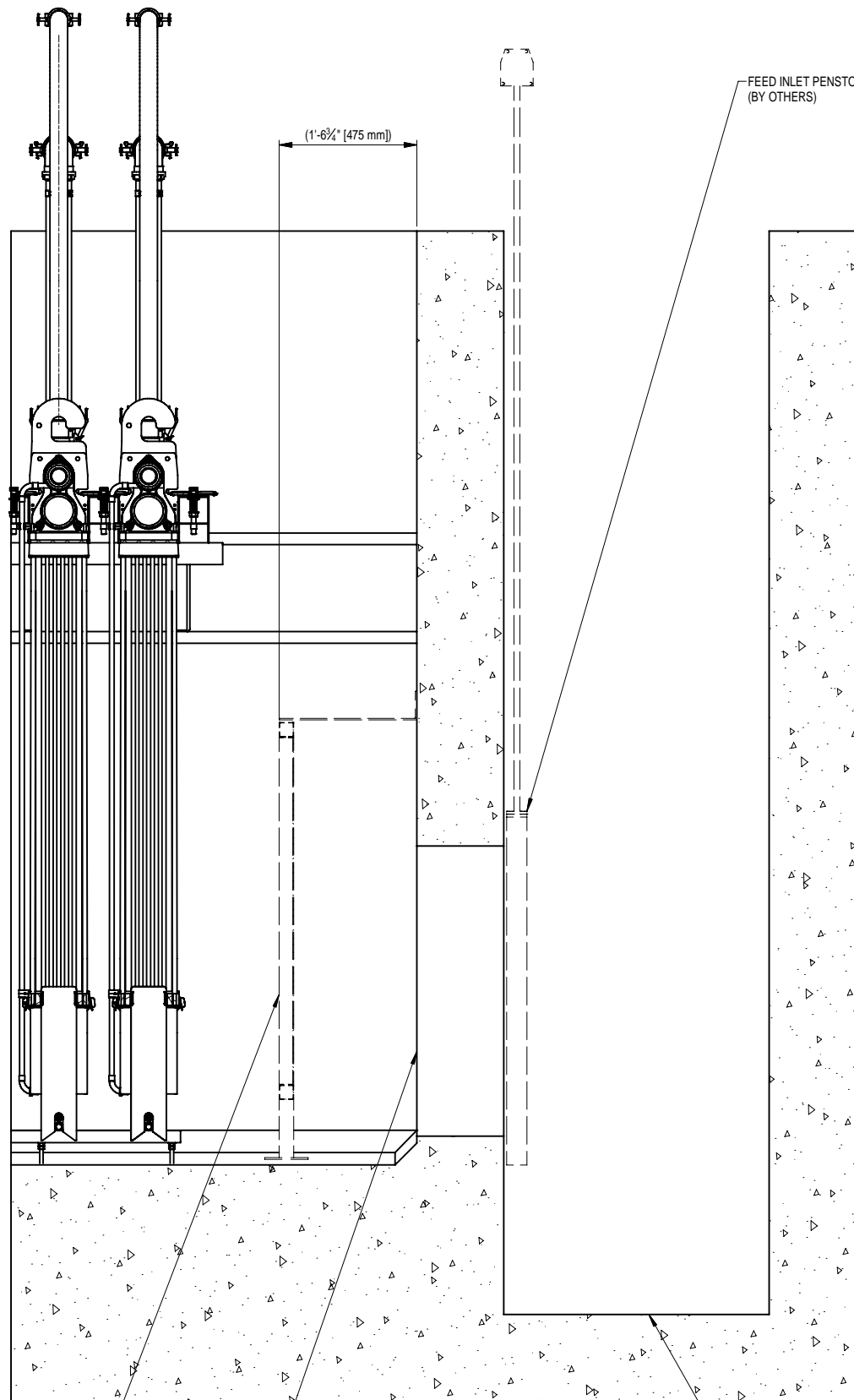
ISSUE NO	DATE	DRN	ZONE REF.	DESCRIPTION OF CHANGE	CHKD	APVD
M	02/07/2020	MB		UPDATED TO DuPont TITLE BLOCK, ECR 7388	JL	YT
K	27/06/2017	MB		SHEET 4 (ML FEED OPTIONS) ADDED, ECR 7120	JWP	GJ
H	07/04/2016	MB		NOTES REVISED SHEETS 4 TO 8 OF THIS DRG. WERE MOVED TO DRG. MGS430-310, ECR 7033	JL	JWP
G	01/04/2015	JL		ADDED DUAL DIMENSIONS & REPLACED WITH EWT GLOBAL BORDER, ECR 6340	GJ	JWP

DIMENSIONS IN MILLIMETRES
DRAWN TO AS1100
DO NOT SCALE
IF IN DOUBT ASK



COMPANY CONFIDENTIAL THIS DOCUMENT AND ALL INFORMATION CONTAINED HEREIN ARE THE PROPERTY OF DuPont AND / OR ITS AFFILIATES. THE DESIGN CONCEPTS AND INFORMATION CONTAINED HEREIN ARE PROPRIETARY TO DuPont AND ARE SUBMITTED IN CONFIDENCE. THEY ARE NOT TRANSFERABLE AND MUST BE USED ONLY FOR THE PURPOSE FOR WHICH THE DOCUMENT IS EXPRESSLY LOANED. THEY MUST NOT BE DISCLOSED, REPRODUCED, LOANED OR USED IN ANY OTHER MANNER WITHOUT THE EXPRESS WRITTEN CONSENT OF DuPont. IN NO EVENT SHALL THEY BE USED IN ANY MANNER DETRIMENTAL TO THE INTEREST OF DuPont. ALL INTELLECTUAL PROPERTY RIGHTS ARE RESERVED. UPON THE DEMAND OF DuPont, THIS DOCUMENT, ALONG WITH ALL COPIES AND EXTRACTS, AND ALL RELATED NOTES AND ANALYSES, MUST BE RETURNED TO DuPont OR DESTROYED, AS INSTRUCTED BY DuPont. ACCEPTANCE OF THE DELIVERY OF THIS DOCUMENT CONSTITUTES AGREEMENT TO THESE TERMS AND CONDITIONS. © DuPont Memcor (Australia) Pty Ltd				DRAWN MB	DATE 12/10/2010	TITLE MBR MEMPULSE MK2 RACK CELL PARAMETERS & GENERAL ARRANGEMENT
				CHECKED JL	DATE 20/10/2010	CLIENT MEMCOR GLOBAL STANDARD
				APPROVED JWP	DATE 22/10/2010	
TOLERANCES Linear : 2m ± 1.0mm ≤ 6' ± 1/32" > 2m ≤ 4m ± 2.0mm > 6' ≤ 12' ± 1/16" > 4m ± 5.0mm > 12' ± 3/16" Angular : ± 0.5° OR AS NOTED				MEMCOR® a DuPont brand		
				DuPont Memcor (Australia) Pty Ltd ABN 36 166 784 694 15 Blackman Crescent, South Windsor NSW 2756, Australia		
				SCALE N.T.S. OR AS NOTED	DRAWING NUMBER MGS430-300 SHEET 3 OF 4 P/N	ISSUE M

FEED CHANNEL OPTION



FEED INLET BAFFLE
(BY OTHERS)
REFER TO NOTE 1 ON THIS SHEET

FEED INLET OPENING

PARTIAL CROSS SECTION (ML FEED CHANNEL OPTION)

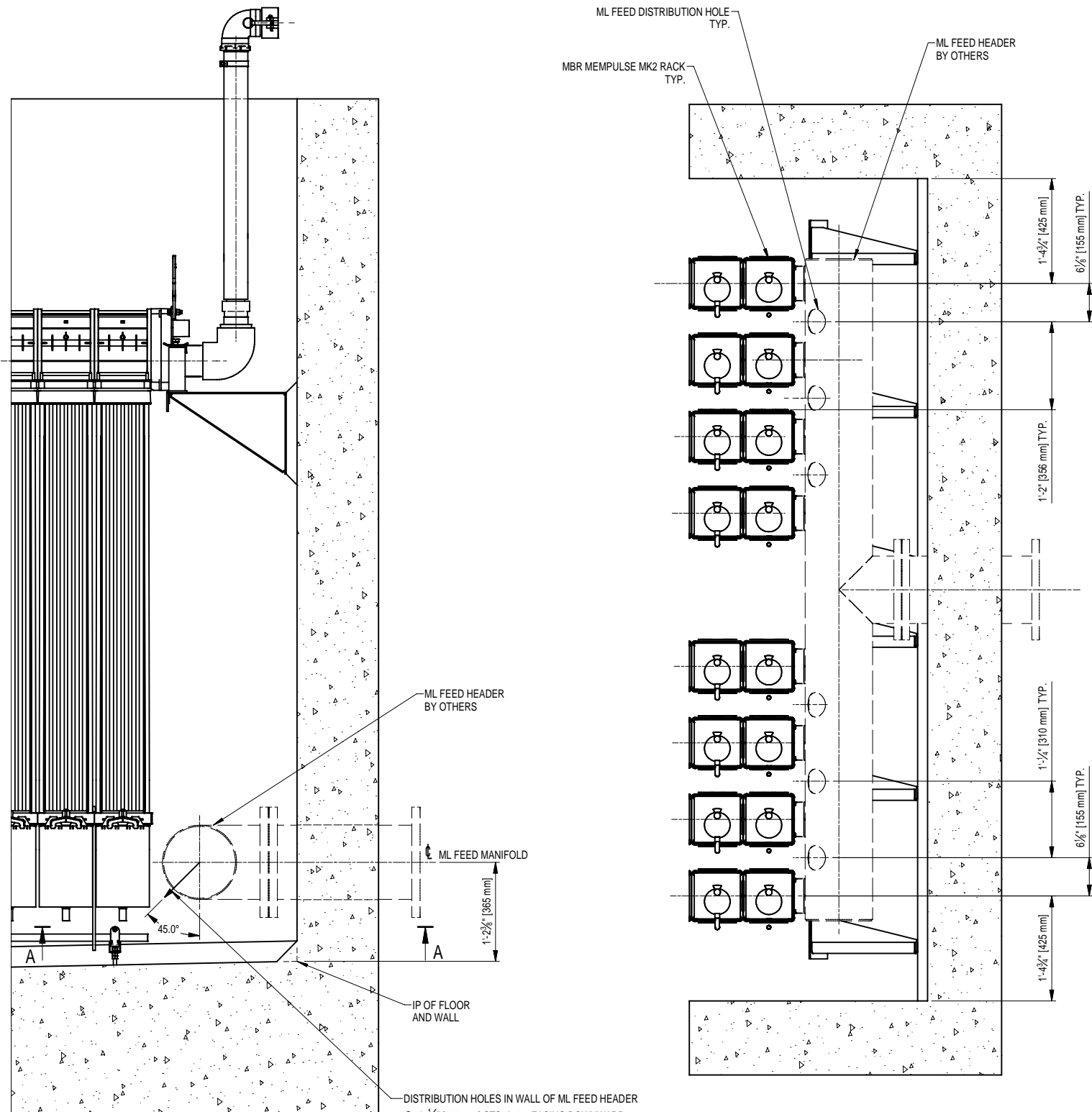
ML FEED CHANNEL

NOTE 1:

1- REFERENCE ONLY, DESIGN TO BE UPDATED FOR PROJECT REQUIREMENTS.
FEED INLET BAFFLE TO BE SIZED TO PREVENT DIRECT FLOW ONTO MEMBRANE RACKS.

DIMENSIONS IN MILLIMETRES
DRAWN TO AS1100
DO NOT SCALE
IF IN DOUBT ASK

FEED HEADER OPTION



ML FEED DISTRIBUTION HOLE
TYP.

MBR MEMPULSE MK2 RACK
TYP.

ML FEED HEADER
BY OTHERS

ML FEED HEADER
BY OTHERS

ML FEED MANIFOLD

1'-2\"/>

IP OF FLOOR
AND WALL

DISTRIBUTION HOLES IN WALL OF ML FEED HEADER
@ 1'-1/4\"/>

SECTION A-A

(TYPICAL ML FEED DISTRIBUTION HOLES ARRANGEMENT)

PARTIAL CROSS SECTION (ML FEED HEADER OPTION)

COMPANY CONFIDENTIAL THIS DOCUMENT AND ALL INFORMATION CONTAINED HEREIN ARE THE PROPERTY OF DuPont AND / OR ITS AFFILIATES. THE DESIGN CONCEPTS AND INFORMATION CONTAINED HEREIN ARE PROPRIETARY TO DuPont AND ARE SUBMITTED IN CONFIDENCE. THEY ARE NOT TRANSFERABLE AND MUST BE USED ONLY FOR THE PURPOSE FOR WHICH THE DOCUMENT IS EXPRESSLY LOANED. THEY MUST NOT BE DISCLOSED, REPRODUCED, LOANED OR USED IN ANY OTHER MANNER WITHOUT THE EXPRESS WRITTEN CONSENT OF DuPont. IN NO EVENT SHALL THEY BE USED IN ANY MANNER DETRIMENTAL TO THE INTEREST OF DuPont. ALL INTELLECTUAL PROPERTY RIGHTS ARE RESERVED. UPON THE DEMAND OF DuPont, THIS DOCUMENT, ALONG WITH ALL COPIES AND EXTRACTS, AND ALL RELATED NOTES AND ANALYSES, MUST BE RETURNED TO DuPont OR DESTROYED, AS INSTRUCTED BY DuPont. ACCEPTANCE OF THE DELIVERY OF THIS DOCUMENT CONSTITUTES AGREEMENT TO THESE TERMS AND CONDITIONS. © DuPont Memcor (Australia) Pty Ltd		DRAWN MB 12/10/2010	DATE 12/10/2010	TITLE MBR MEMPULSE MK2 RACK CELL PARAMETERS & GENERAL ARRANGEMENT	
CHECKED JL 20/10/2010		APPROVED JWP 22/10/2010	DATE 22/10/2010	CLIENT MEMCOR GLOBAL STANDARD	
TOLERANCES Linear : < 2m = ± 1.0mm < 6' = ± 1/32" > 2m ≤ 4m = ± 2.0mm > 6' ≤ 12' = ± 1/16" > 4m = ± 5.0mm > 12' = ± 3/16"		Angular : ± 0.5' OR AS NOTED		SCALE N.T.S. OR AS NOTED	
				DRAWING NUMBER MGS430-300 SHEET 4 OF 4 P/N	ISSUE M

MEMCOR®
a DuPont brand

DuPont Memcor (Australia) Pty Ltd
ABN 36 166 784 694
15 Blackman Crescent, South Windsor
NSW 2756, Australia

ISSUE NO	DATE	DRN	ZONE REF.	DESCRIPTION OF CHANGE	CHKD	APVD
M	02/07/2020	MB		UPDATED TO DuPont TITLE BLOCK, ECR 7388	JL	YT
K	27/06/2017	MB		SHEET 4 (ML FEED OPTIONS) ADDED, ECR 7120	JWP	GJ
H	07/04/2016	MB		NOTES REVISED SHEETS 4 TO 8 OF THIS DRG. WERE MOVED TO DRG. MGS430-310, ECR 7033	JL	JWP
G	01/04/2015	JL		ADDED DUAL DIMENSIONS & REPLACED WITH EWT GLOBAL BORDER, ECR 6340	GJ	JWP