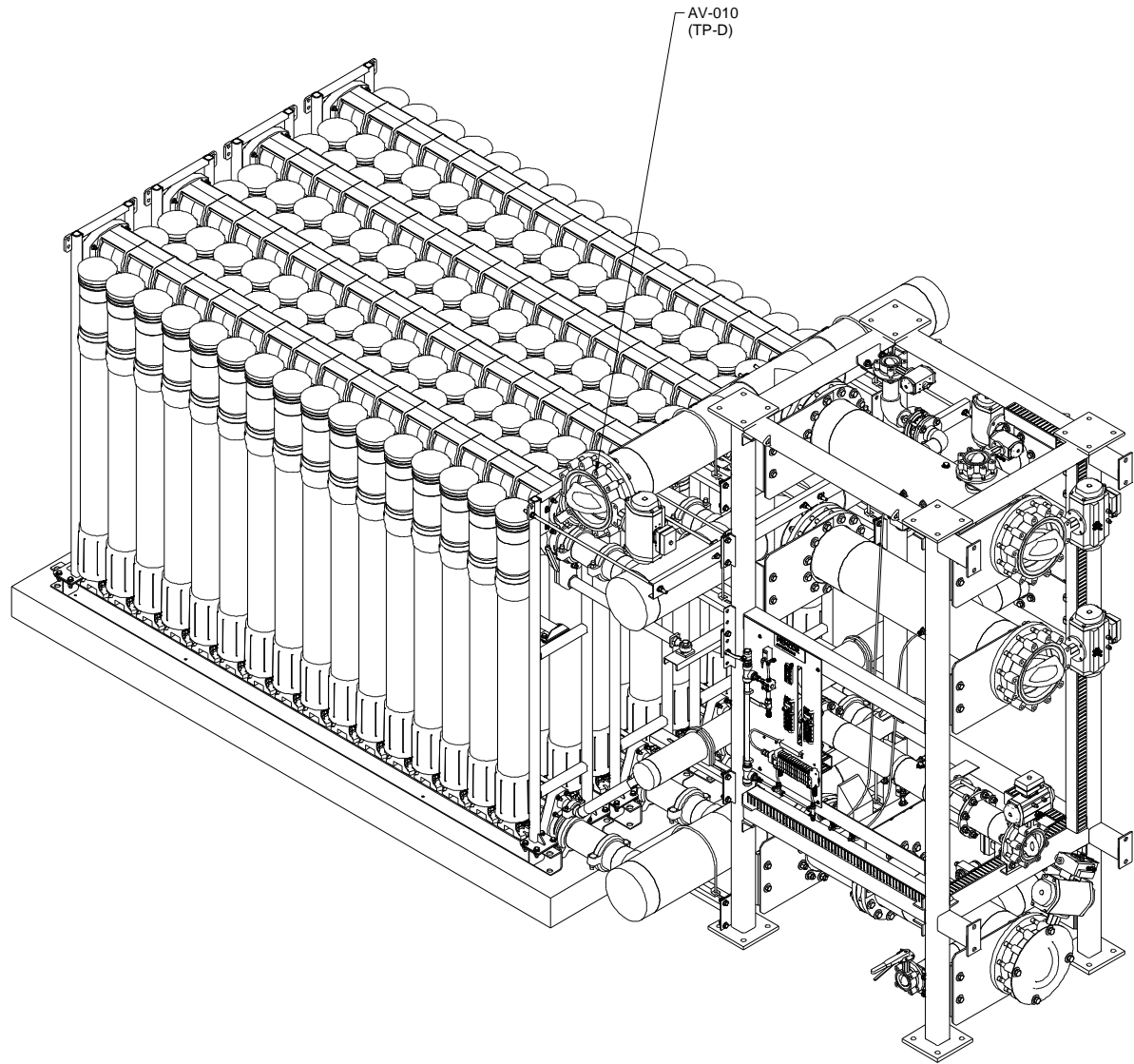
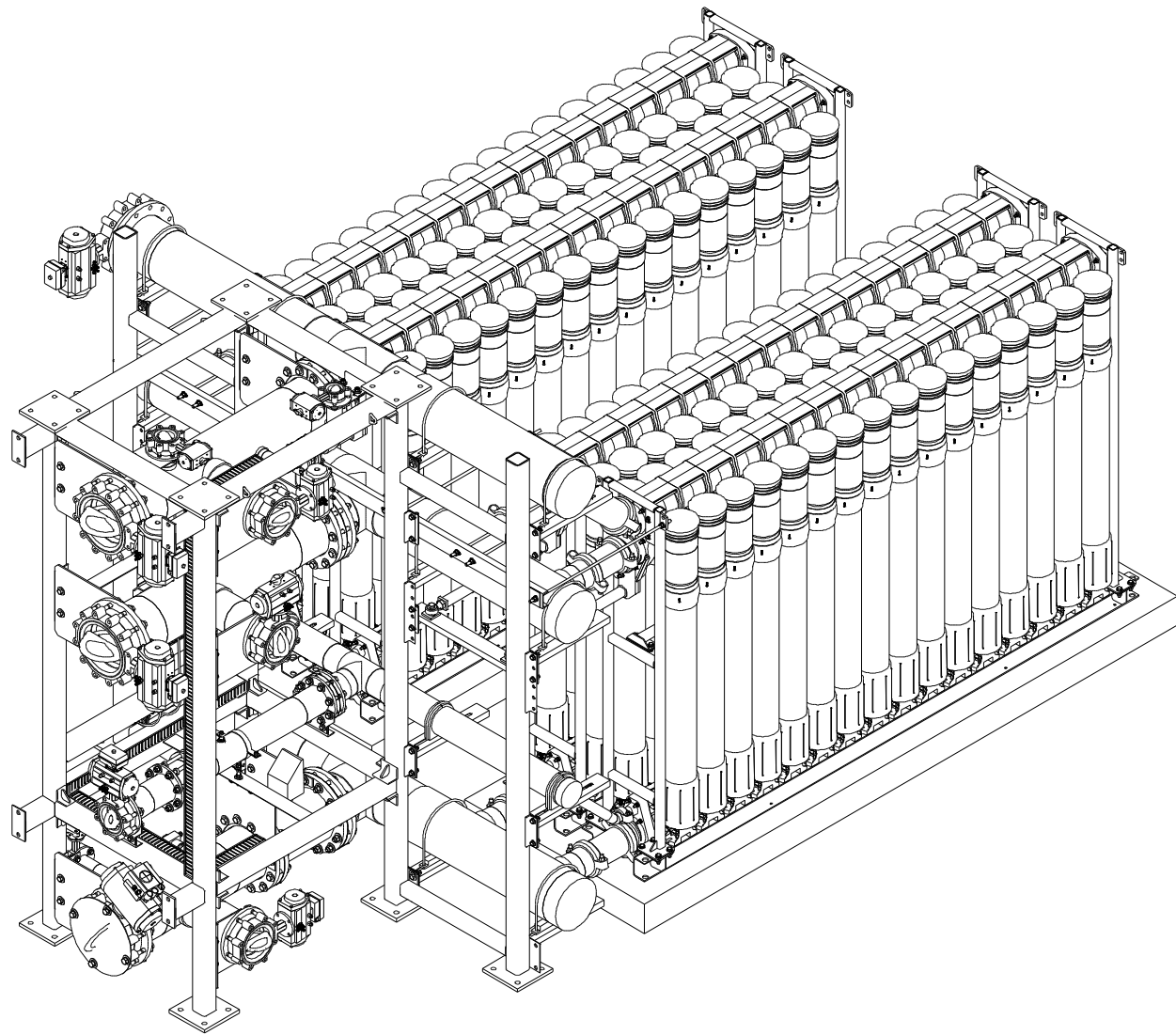




STD-22434\_D 0616 Border.dwg BAR = 1" AT PLOT SCALE

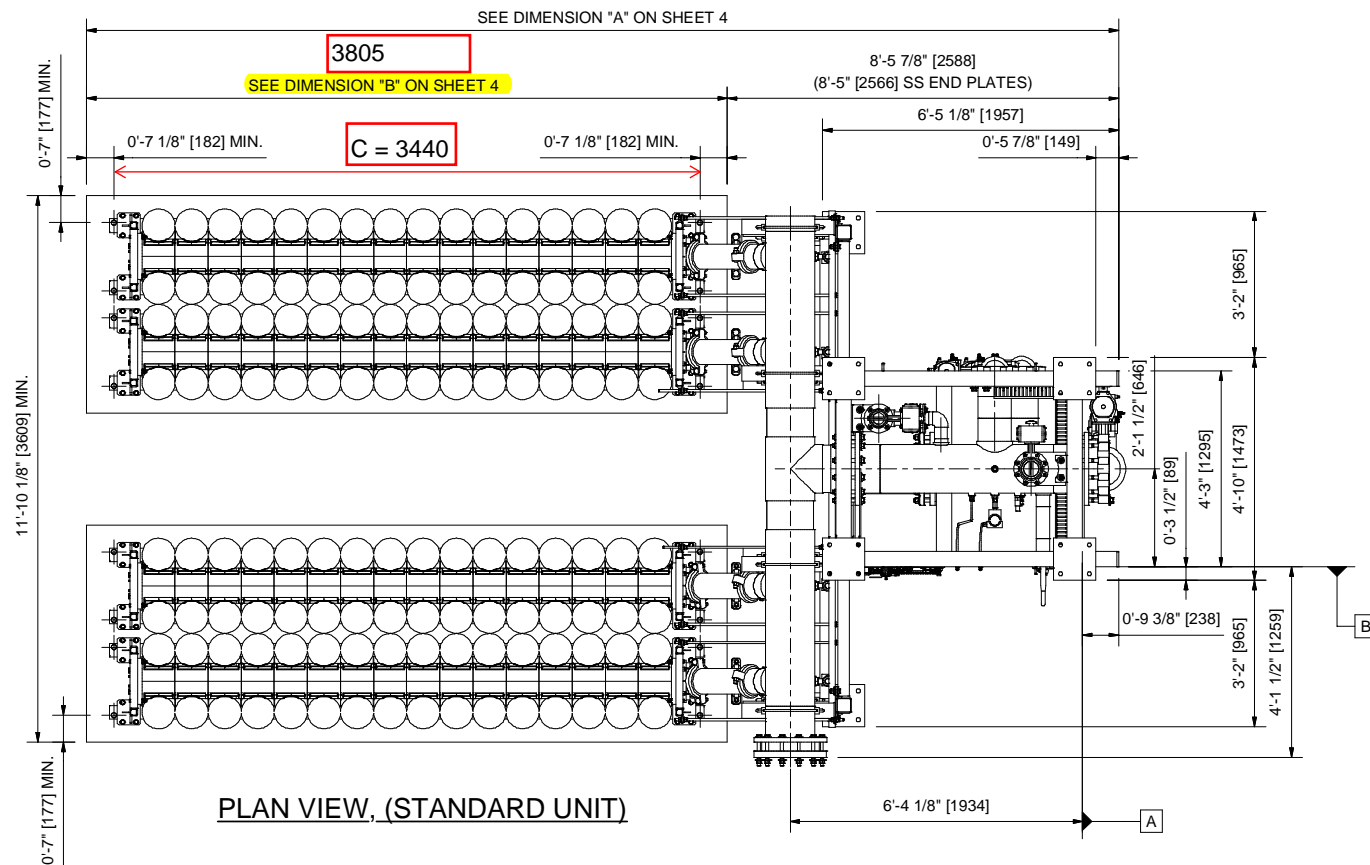


**CP11 MR4 QUAD RACK W/ OPTIONAL LIQUID BACKWASH**  
ONLY WHEN THERE IS SPACE BETWEEN SKIDS  
IF TOGETHER, PLEASE CONSULT

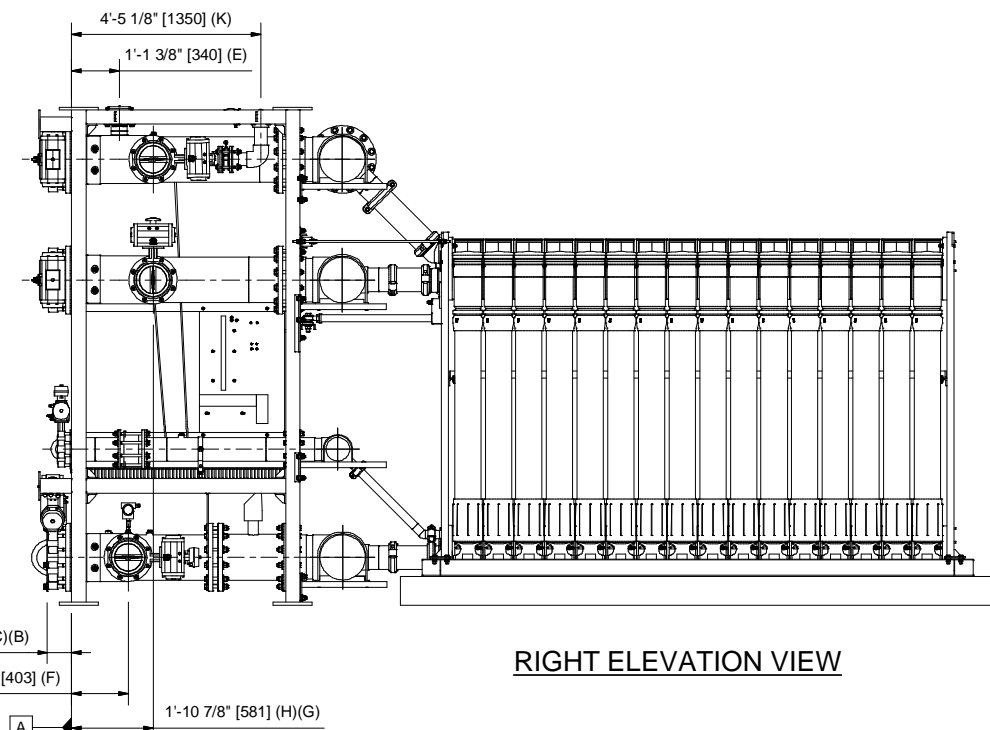
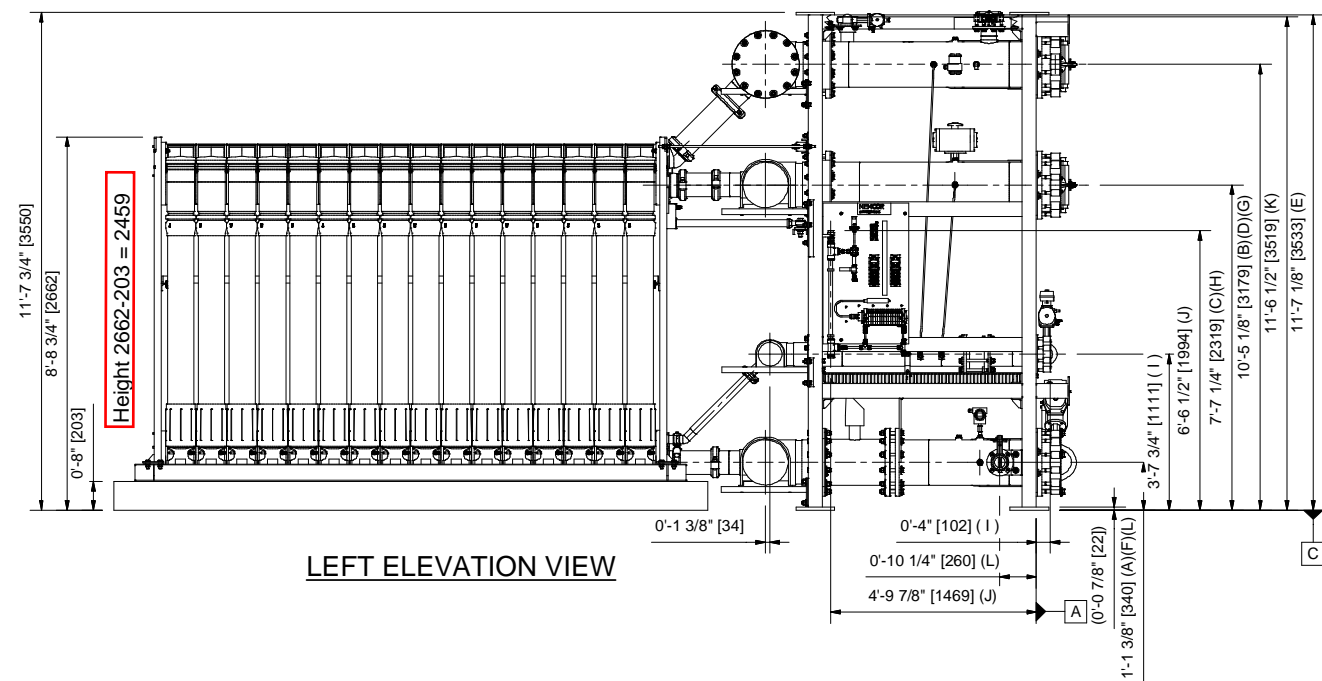
						COMPANY CONFIDENTIAL INFORMATION THIS DOCUMENT AND ALL INFORMATION CONTAINED HEREIN, INCLUDING THE DESIGN CONCEPTS, ARE THE PROPERTY OF EVOQUA AND/OR ITS AFFILIATES AND ARE SUBMITTED IN CONFIDENCE. THEY MAY BE USED ONLY FOR THE EXPRESS PURPOSE FOR WHICH THEY ARE PROVIDED AND MUST NOT BE DISCLOSED, REPRODUCED, LOANED OR USED IN ANY OTHER MANNER WITHOUT THE EXPRESS WRITTEN CONSENT OF EVOQUA. ALL PATENT RIGHTS ARE RESERVED. THIS DOCUMENT IS PROTECTED UNDER APPLICABLE COPYRIGHT LAWS. UPON DEMAND OF EVOQUA, THIS DOCUMENT, ALONG WITH ALL COPIES AND EXTRACTS, AND ALL RELATED NOTES AND ANALYSES MUST BE RETURNED TO EVOQUA OR DESTROYED, AS INSTRUCTED BY EVOQUA. ACCEPTANCE OF THE DELIVERY OF THIS DOCUMENT CONSTITUTES AGREEMENT TO THESE TERMS.	DESIGNER	DATE	TITLE						
04E	ADDED CP11 36 RACKS TO TABLES	22Feb17	RV	DRM	ST		MG5-145	RV	30Apr14	QUAD RACK GENERAL ARRANGEMENT MEMCOR CP11 MR4 UNIT					
3D	REVISED TOLERANCES SHEET 3-5	07Jun16	AK	DRM	ST		MG5-135	CHECKER	DATE		CLIENT				
2C	CHANGED STANDARD TO SHOW CP11 RACK WITH MOULDED END PLATES	23Feb16	RV	DRM	ST		MG5-123	ST	17Sep14	MEMCOR GLOBAL STANDARD PRODUCT					
1B	UPDATED DWG INCLUDING GA FOR SEISMIC AND THRUST LOAD CALCULATIONS	30Oct14	CP	ST	ST		MG5-98	ENGINEER	DATE						
0A	CONSTRUCTION ISSUE	17Sep14	CP	ST	ST	--	ST	17Sep14	MANAGER	DATE					
REV	DESCRIPTION	DATE	DWN	CHKD	APVD	ECN	REF:								
							SCALE								
							NONE								
											PROJECT	CODE	DRAWING	SHEET	REV
											GLOBAL		MGS92064003	2 OF 5	04E



CP2 DOUBLE RACK PIPING INFORMATION			
LABEL	DESCRIPTION	SIZE	TYPE
TP-A	FEED INLET	12"	FLANGE
TP-B	FILTRATE OUTLET	12"	FLANGE
TP-C	BACKWASH OUTLET	12"	FLANGE
TP-D	FILTRATE BACKWASH INLET (OPTIONAL)	12"	FLANGE
TP-E	FILTRATE EXHAUST	4"	FLANGE
TP-F	CIP IN/DRAIN	8"	FLANGE
TP-G	CIP RETURN FILTRATE	8"	FLANGE
TP-H	CIP RETURN FEED	8"	FLANGE
TP-I	AIR SCOUR INLET	6"	FLANGE
TP-J	CONTROL AIR INLET	1"	BSP THD
TP-K	PROCESS AIR INLET	3"	FLANGE
TP-L	DRAIN, MANUAL VALVE	3"	FLANGE




**PLAN VIEW (OPTIONAL LIQUID BACKWASH)**  
DIMENSIONS A, B & C SAME AS STANDARD UNIT



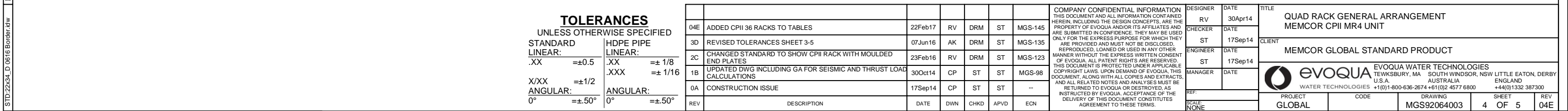
2. TYPICAL RACK SHOWN ON THIS DRAWING CONTAINS 32 MODULES.  
FOR OTHER SIZES, SEE DIMENSIONAL TABLE ON SHEET 4.


TOLERANCES	
UNLESS OTHERWISE SPECIFIED	
STANDARD LINEAR:	HDPE PIPE LINEAR:
.XX = ±0.5	.XX = ± 1/8
X/XX = ±1/2	.XXX = ± 1/16
ANGULAR:	ANGULAR:
0° = ±.50°	0° = ±.50°

**COMPANY CONFIDENTIAL INFORMATION**  
THIS DOCUMENT AND ALL INFORMATION CONTAINED  
HEREIN, INCLUDING THE DESIGN CONCEPTS, ARE THE  
PROPERTY OF EVOCOA AND/OR ITS AFFILIATES AND  
ARE SUBMITTED IN CONFIDENCE. IT IS TO BE USED  
ONLY FOR THE EXPRESS PURPOSE FOR WHICH THE  
IT IS PROVIDED AND MUST NOT BE DISCLOSED,  
REPRODUCED, LOANED OR USED IN ANY OTHER  
MANNER WITHOUT THE EXPRESS WRITTEN CONSENT  
OF EVOCOA. ALL PATENT RIGHTS ARE RESERVED.  
THIS DOCUMENT IS NOT TO BE REPRODUCED OR  
COPYRIGHT LAWS. UPON DEMAND OF EVOCOA, THIS  
DOCUMENT, ALONG WITH ALL COPIES AND EXTRACTS  
AND ALL RELATED NOTES AND ANALYSES MUST BE  
RETURNED TO EVOCOA OR DESTROYED, AS  
INSTRUCTED BY EVOCOA. ACCEPTANCE OF THE  
DELIVERY OF THIS DOCUMENT CONSTITUTES  
AGREEMENT TO THESE TERMS.

DESIGNER	DATE	TITLE				
RV	30Apr14	QUAD RACK GENERAL ARRANGEMENT				
CHECKER	DATE	MEMCOR CPII MR4 UNIT				
ST	17Sep14	CLIENT	MEMCOR GLOBAL STANDARD PRODUCT			
ENGINEER	DATE	<div> <b>evoqua</b> EVOQUA WATER TECHNOLOGIES TEWKSBURY, MA SOUTH WINDSOR, NSW LITTLE EATON, DERBY U.S.A. AUSTRALIA WATER TECHNOLOGIES +1(01)-800-636-2674 +61(02) 4577 6800 +44(0)1332 387300</div>				
ST	17Sep14					
MANAGER	DATE					
REF:						
SCALE:						
PROJECT		CODE	DRAWING		SHEET	REV
GI ORAI			DCS92064003		3 OF 5	04

Use this. We provide a CPlI28 for a 26 Modules Rack.



							COMPANY CONFIDENTIAL INFORMATION THIS DOCUMENT AND ALL INFORMATION CONTAINED HEREIN, INCLUDING THE DESIGN CONCEPTS, ARE THE PROPERTY OF EVOQUA AND/OR ITS AFFILIATES AND ARE SUBMITTED IN CONFIDENCE. THEY MAY BE USED ONLY FOR THE EXPRESS PURPOSE FOR WHICH THEY ARE PROVIDED AND MUST NOT BE REPRODUCED, REPRODUCED, LOANED OR USED IN ANY OTHER MANNER WITHOUT THE EXPRESS WRITTEN CONSENT OF EVOQUA. ALL PATENT RIGHTS ARE RESERVED. THIS DOCUMENT IS PROTECTED UNDER APPLICABLE COPYRIGHT LAWS, UNLESS DEMAND OF EVOQUA. THIS DOCUMENT, ALONG WITH ALL COPIES AND EXTRACTS, AND ALL RELATED NOTES AND ANALYSES MUST BE RETURNED TO EVOQUA OR DESTROYED, AS INSTRUCTED BY EVOQUA. ACCEPTANCE OF THE DELIVERY OF THIS DOCUMENT CONSTITUTES AGREEMENT TO THESE TERMS.				DESIGNER	DATE	TITLE				
04E	ADDED CPMI 36 RACKS TO TABLES	22Feb17	RV	DRM	ST	MGS-145	CHECKER	30Apr14	QUAD RACK GENERAL ARRANGEMENT MEMCOR CPMI MR4 UNIT								
3D	REVISED TOLERANCES SHEET 3-5	07Jun16	AK	DRM	ST	MGS-135	ENGINEER	17Sep14	CLIENT								
2C	CHANGED STANDARD TO SHOW CPMI RACK WITH MOULDED END PLATES	23Feb16	RV	DRM	ST	MGS-123	ENGINEER	17Sep14	MEMCOR GLOBAL STANDARD PRODUCT								
1B	UPDATED DWG INCLUDING GA FOR SEISMIC AND THRUST LOAD CALCULATIONS	30Oct14	CP	ST	ST	MGS-98	MANAGER	DATE	 EVOQUA WATER TECHNOLOGIES TESSSBURY, MA SOUTH WINDSOR, NSW LITTLE EATON, DERBY U.S.A AUSTRALIA ENGLAND +1(01)-800-636-2674 +61(02) 4577 6800 +44(0)1332 387300								
0A	CONSTRUCTION ISSUE	17Sep14	CP	ST	ST	--											
REV	DESCRIPTION	DATE	DWN	CHKD	APVD	ECN	REF:	SCALE	PROJECT	CODE	DRAWING	SHEET	REV				
							NONE	GLOBAL			MGS92064003	4	OF 5	04E			

